



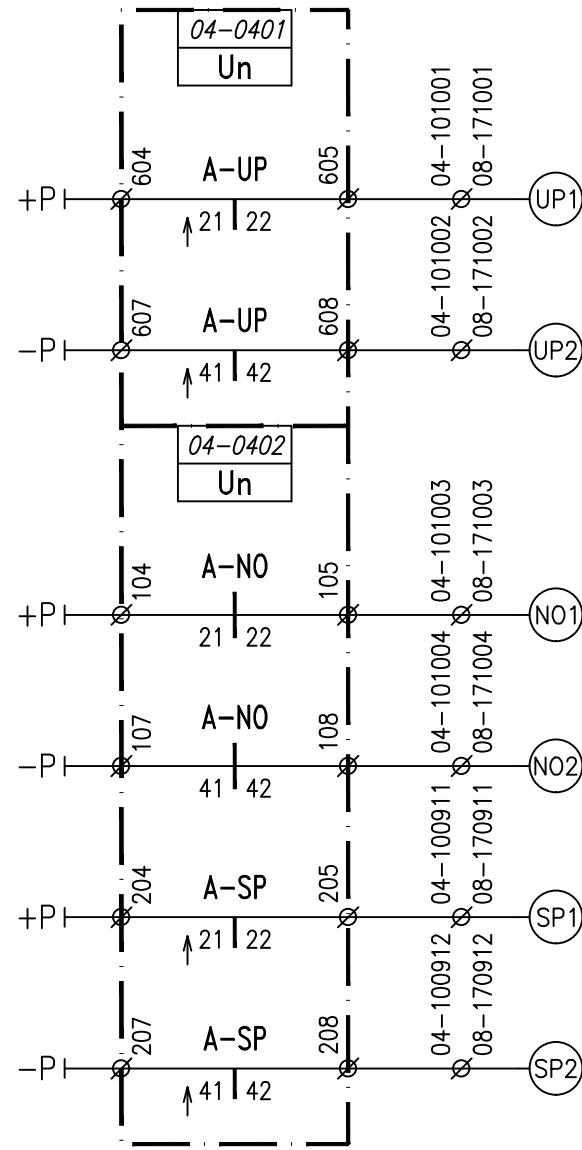
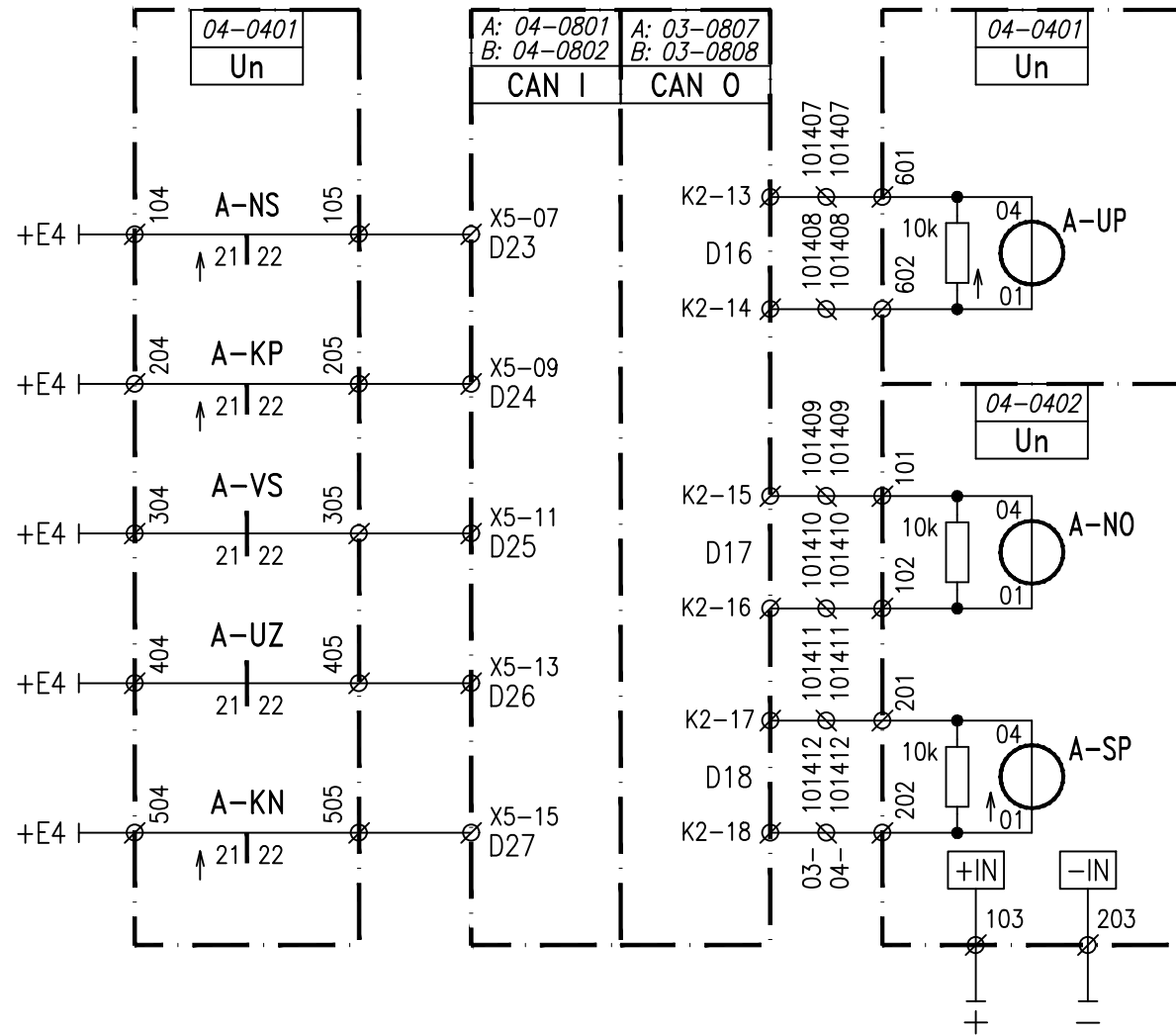
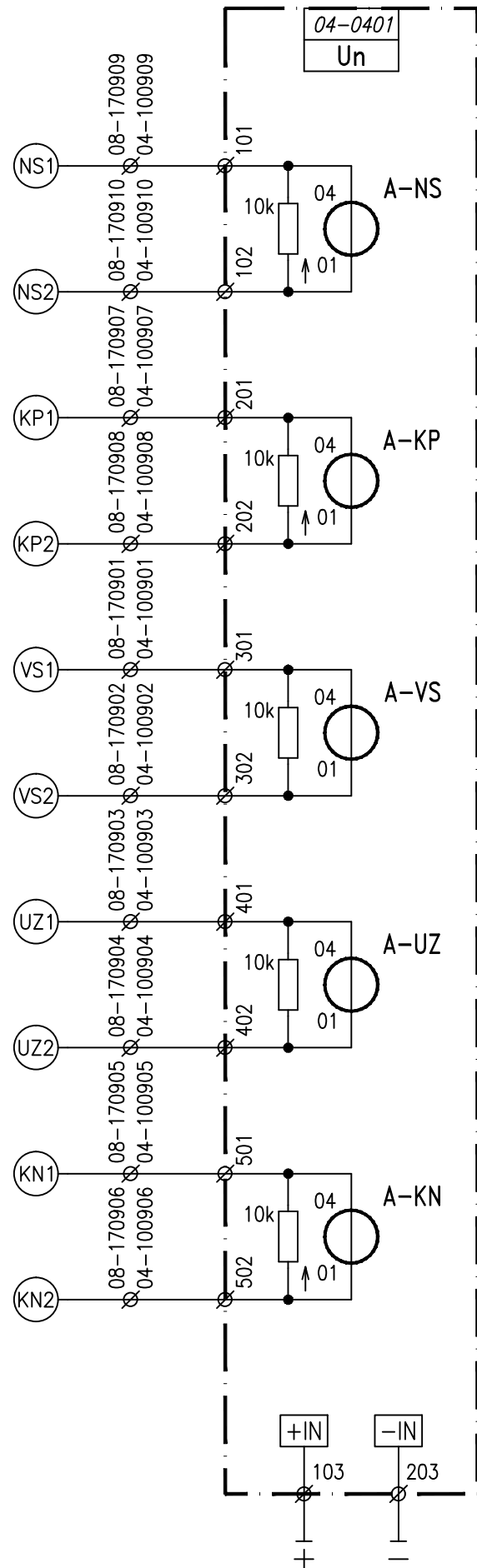
Seznam výkresů:

- 5001 Vazba PZS "A" v km 33,125
- 5002 Vazba PZS "N1" v km 34,038
- 5003 Spol. vazby na PZS směr Chlumec n. C. – 1. část
- 5004 Spol. vazby na PZS směr Chlumec n. C. – 2. část
- 5005 Vazba PZS "H" v km 29,170
- 5006 Vazba PZS "G" v km 29,586
- 5007 Vazba PZS "F" v km 30,045
- 5008 Vazba PZS "E" v km 30,231
- 5009 Vazba PZS "C" v km 31,841
- 5010 Vazba PZS "B" v km 32,657
- 5011 Spol. vazby na PZS směr Smidary
- 5012 Vazba PZS "E" v km 35,774
- 5013 Vazba PZS "D" v km 36,284
- 5014 Vazba PZS "C" v km 36,548
- 5015 Vazba PZS – linky diagnostiky PZS

	Jméno	Podpis	Zakázkové číslo 22-024-40-311	<b>signal</b> <b>PROJEKT</b>  Pracoviště Olomouc
Navrhl	Křenek		Datum 08.2021	
Kontroloval	Křenek		Stupeň dokumentace RDS	
Stavba: Oprava zabezpečovacího zařízení v ŽST Nový Bydžov PS 01-01 Staniční zabezpečovací zařízení v ŽST Nový Bydžov				5000
ŽST NOVÝ BYDŽOV OBVODY VAZEB PZS				

PZS A v km 33,125 SKŘÍŇ Č. 08

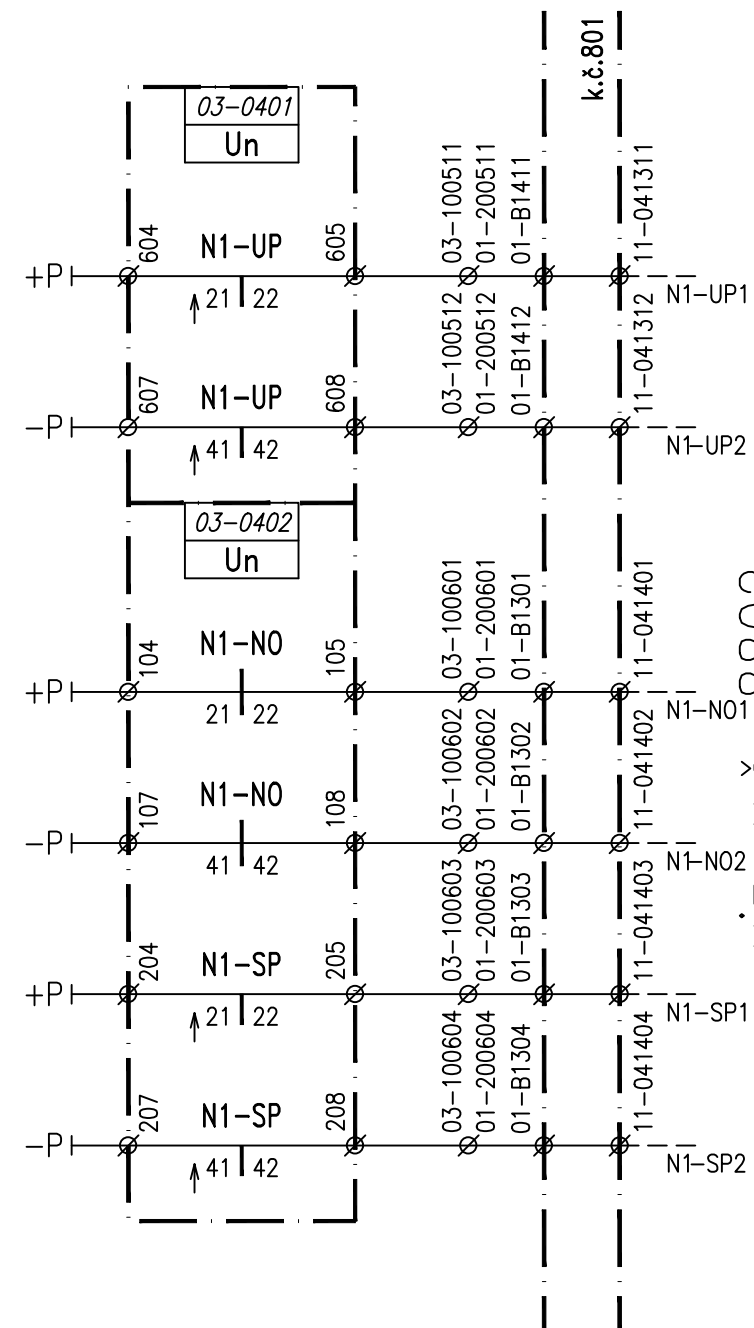
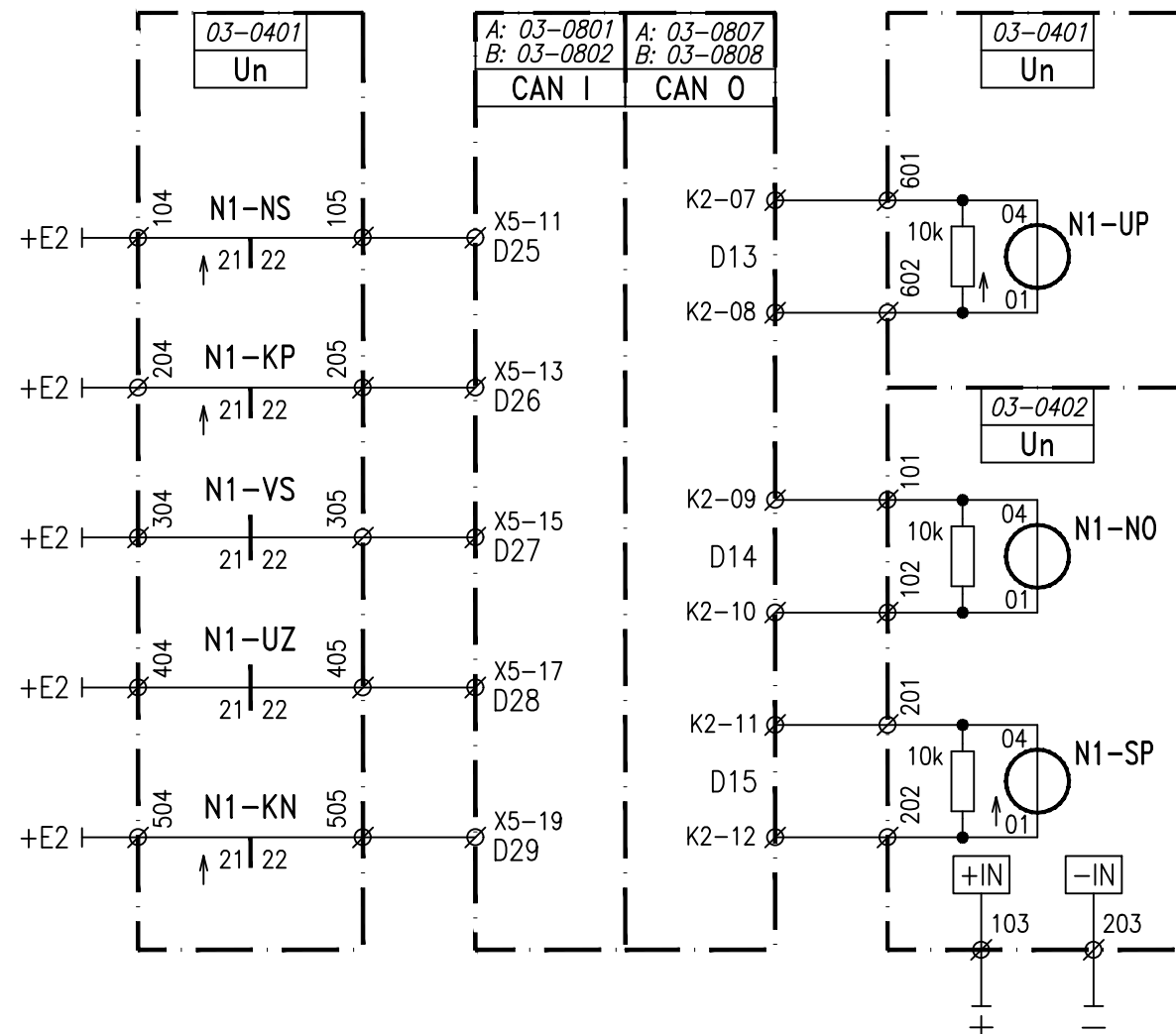
VIZ. V.Č. 8121



VIZ. V.Č. 8103

PZS A v km 33,125 SKŘÍŇ Č. 08

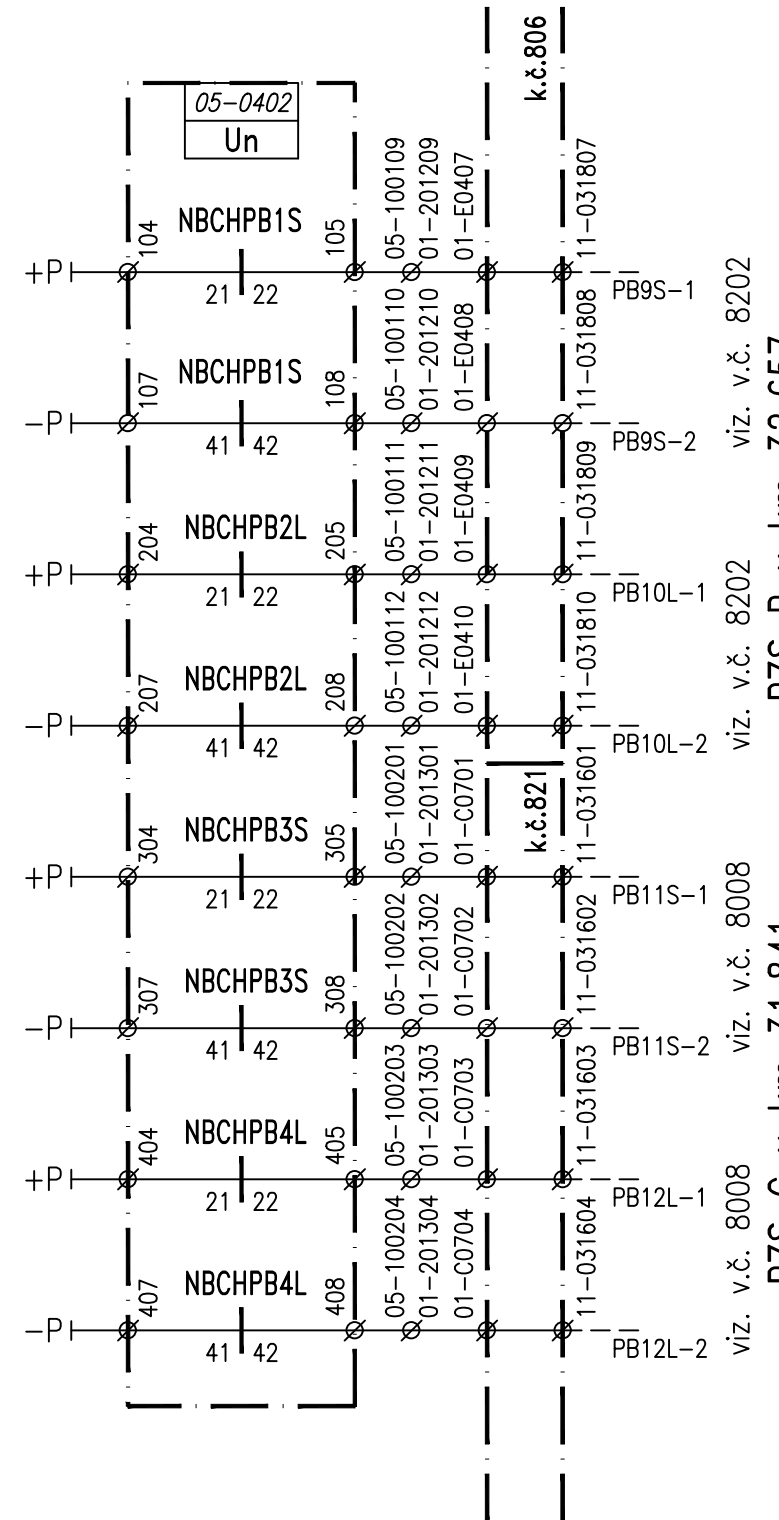
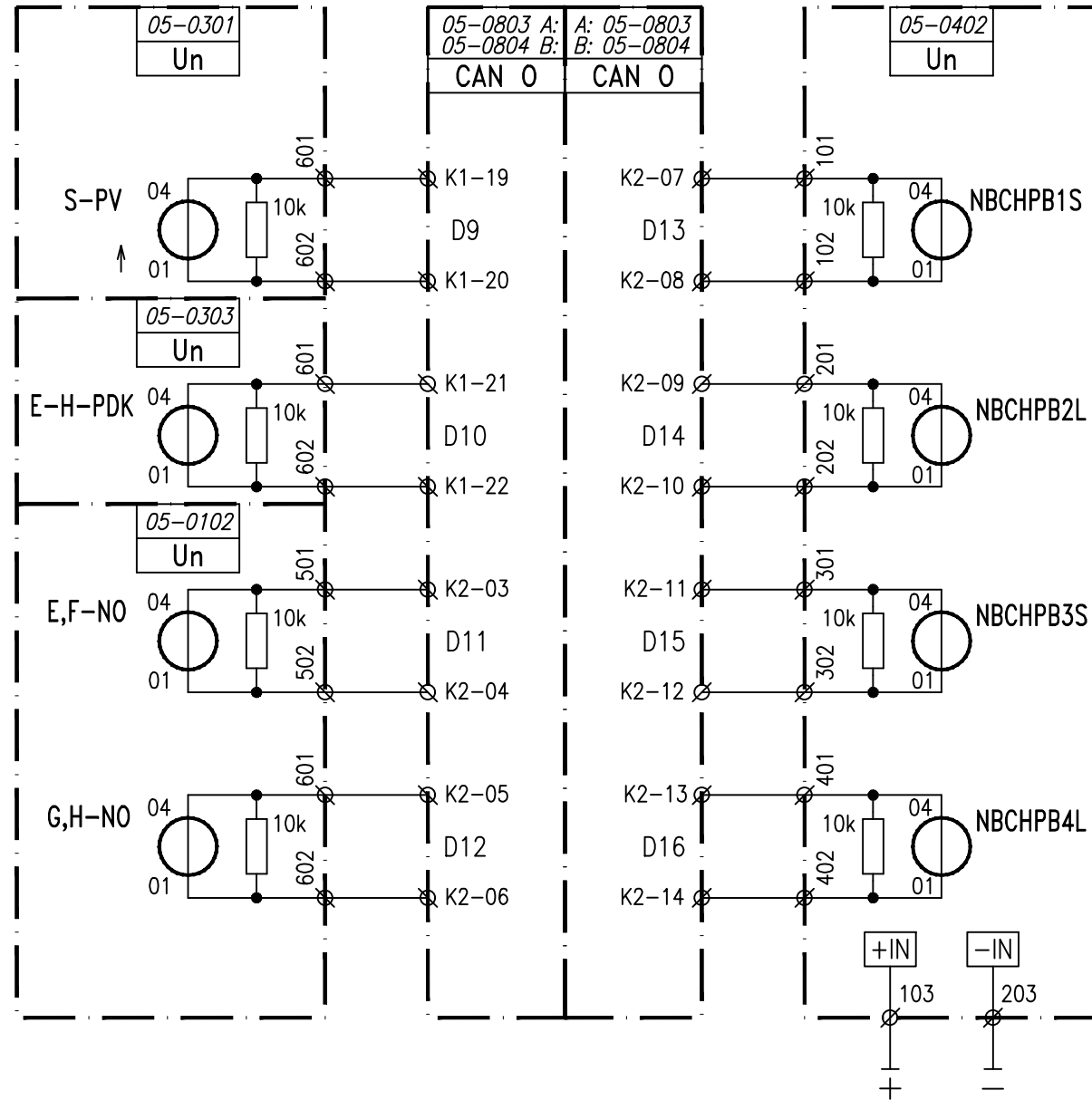
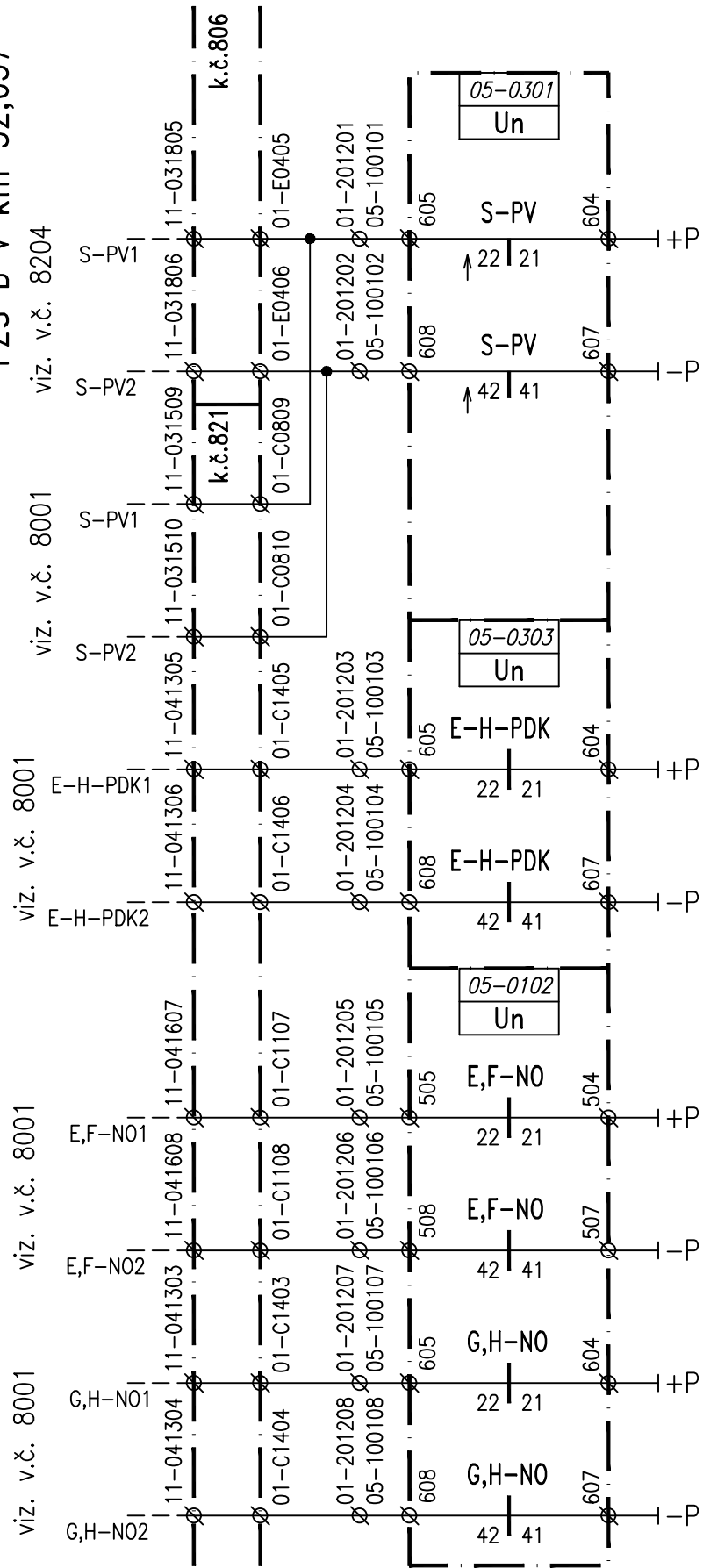
viz. v.č. 8814



viz. v.č. 8802  
 PZS N1 v km 34,038

PZS C v km 31,841

PZS B v km 32,657



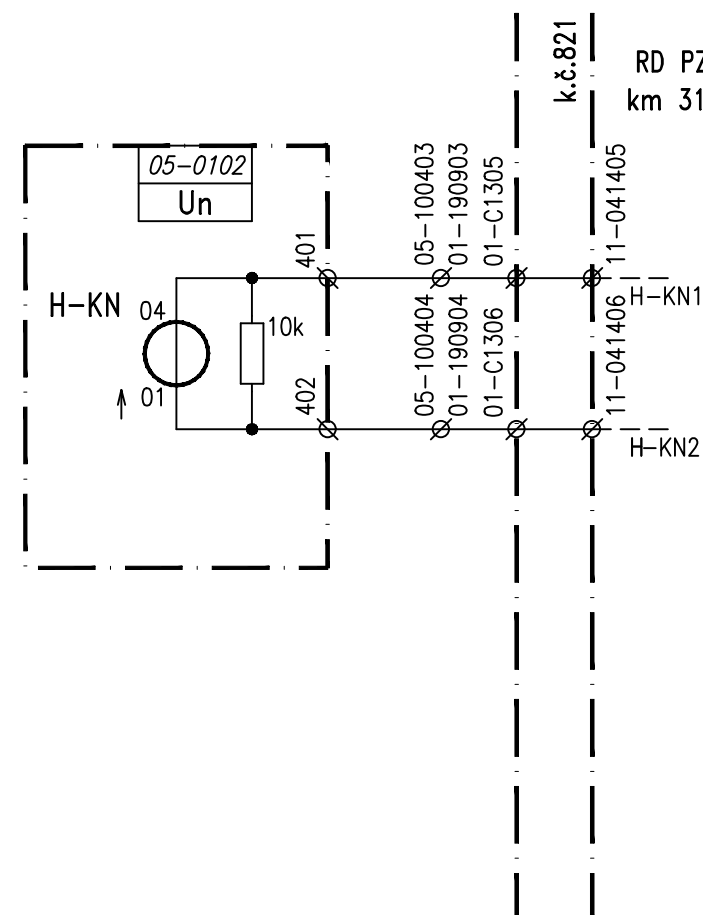
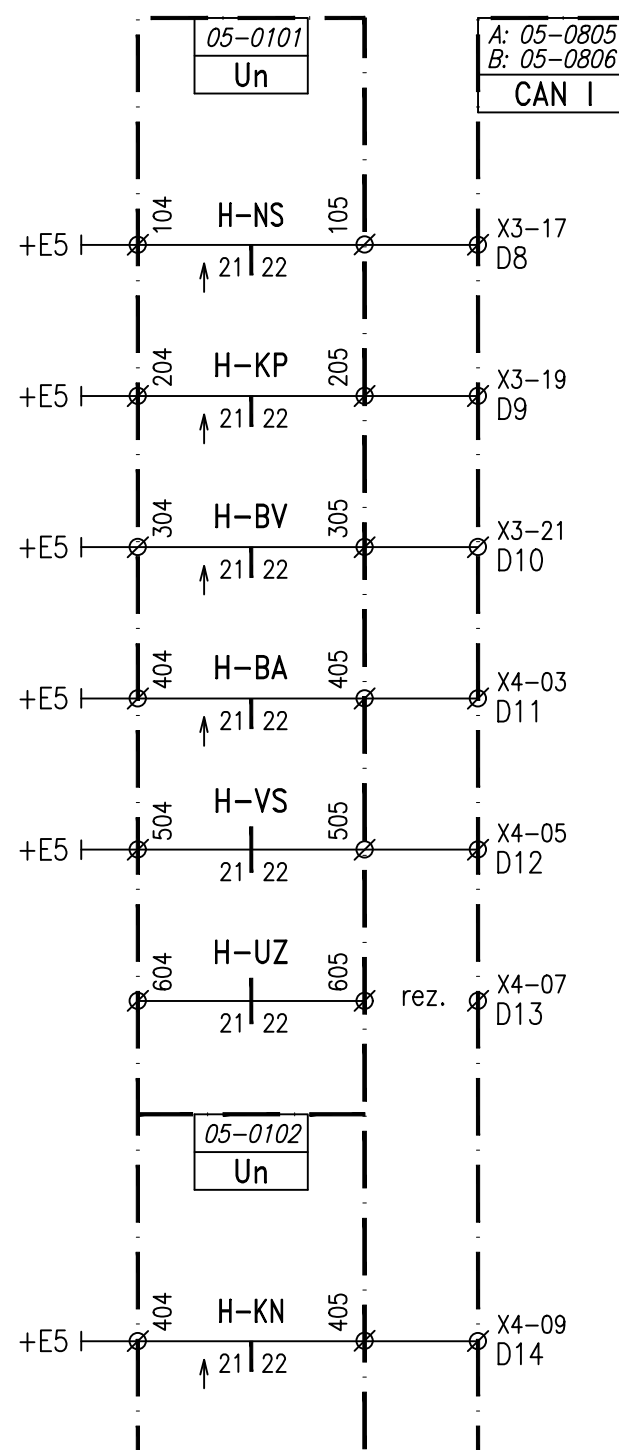
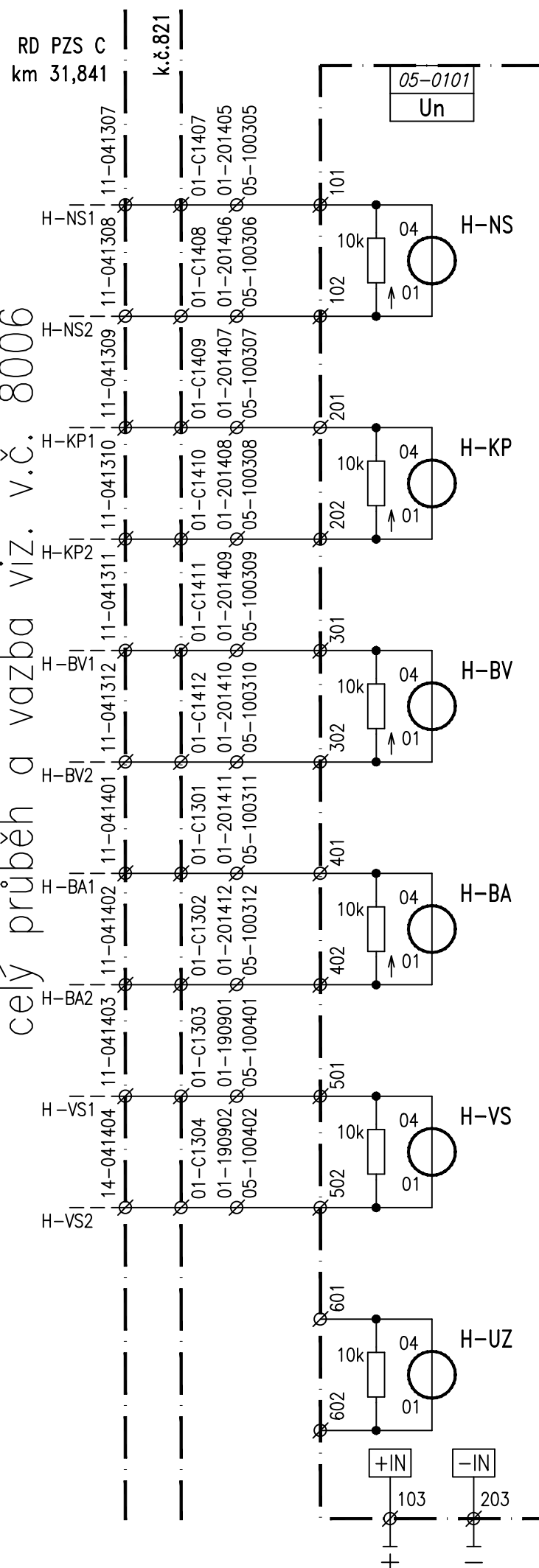
PZS B v km 32,657

PZS C v km 31,841



PZS H v km 29,170

celý průběh a vazba viz. v.č. 8006



celý průběh a vazba viz. v.č. 8006

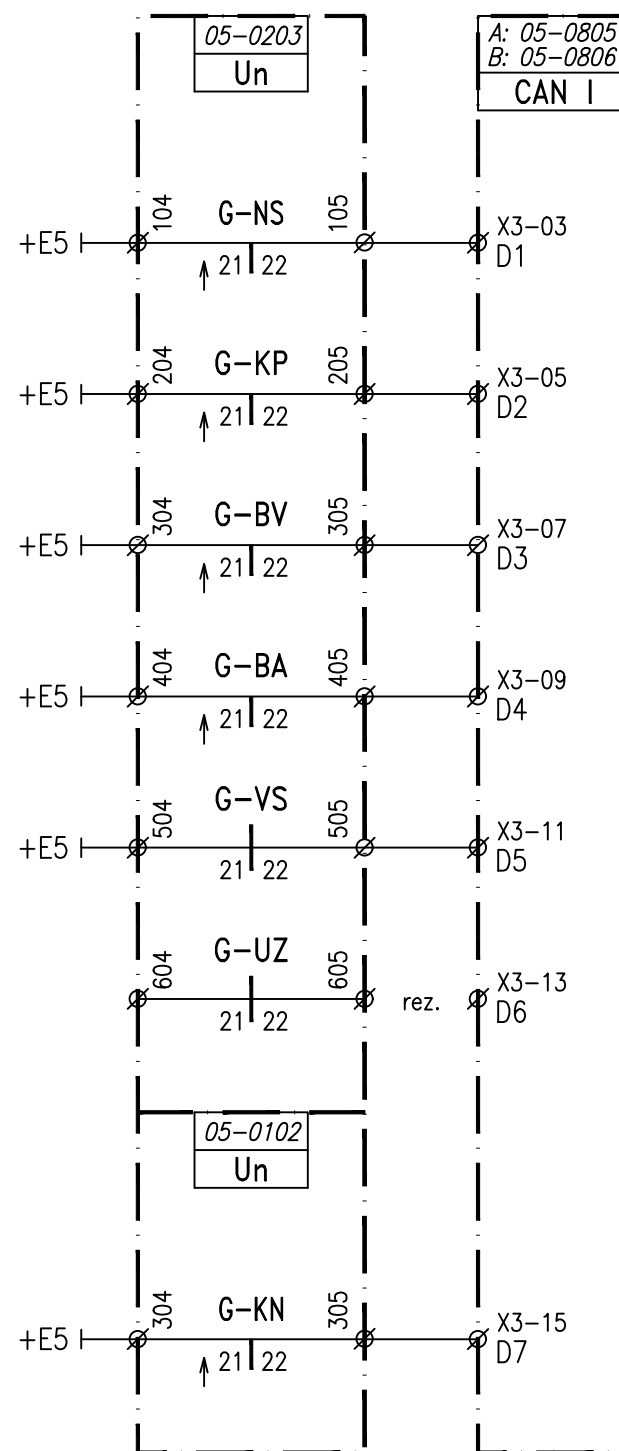
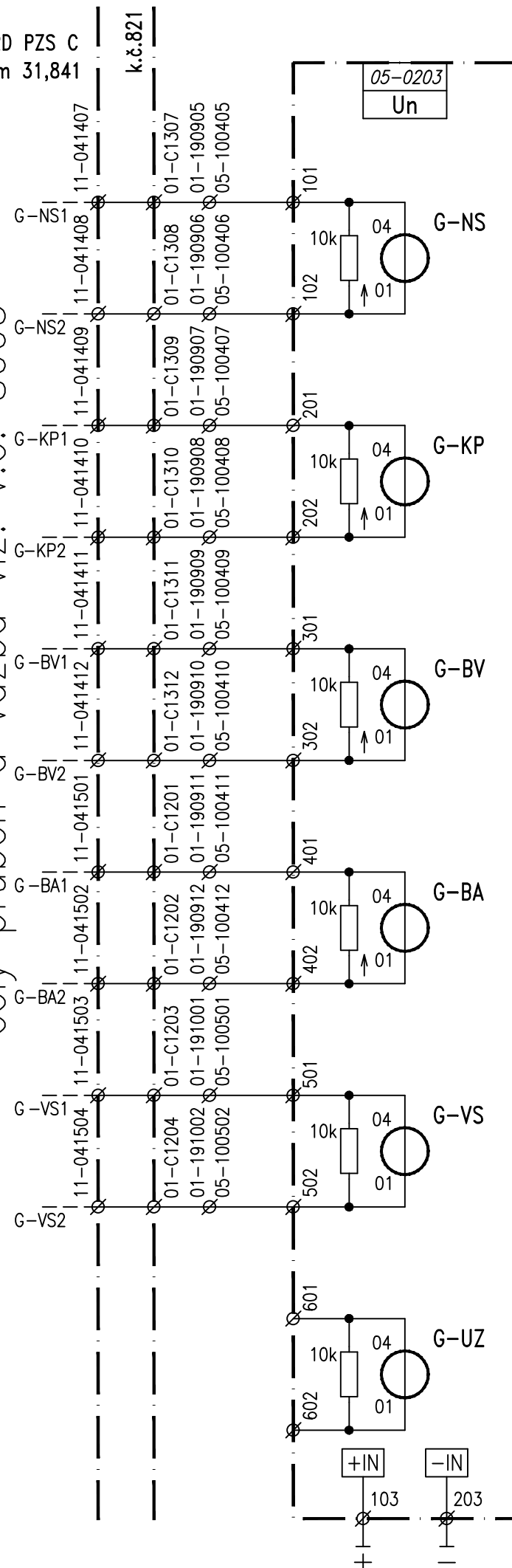
PZS H v km 29,170

PZS G v km 29,586

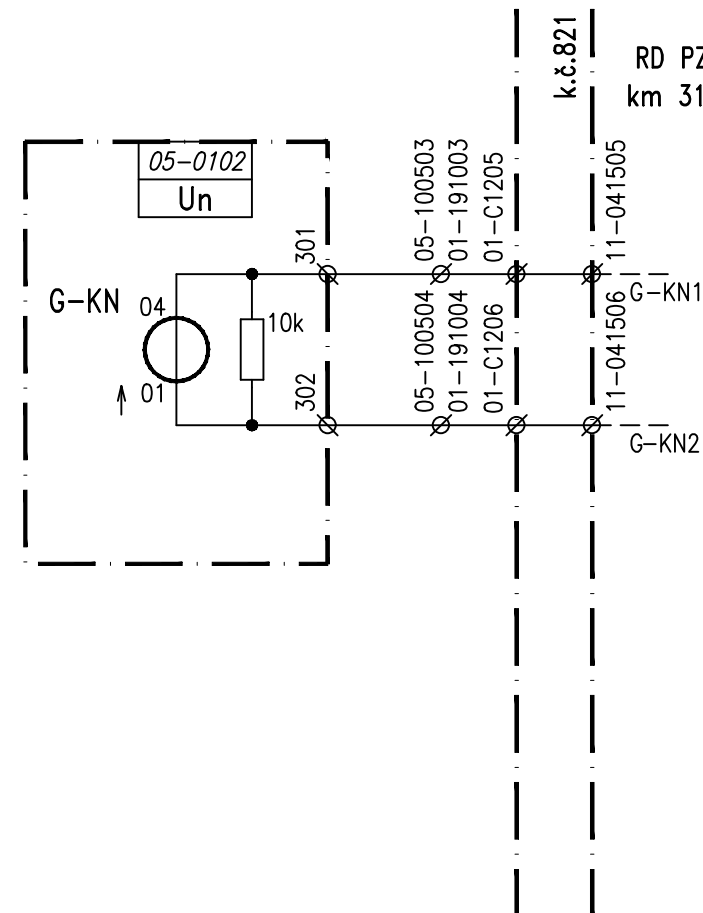
celý průběh a vazba viz. v.č. 8005

RD PZS C  
km 31,841

k.č.821



Komunikační linky diagnostiky PZS viz. v.č. 5015.



RD PZS C  
km 31,841

celý průběh a vazba viz. v.č. 8005

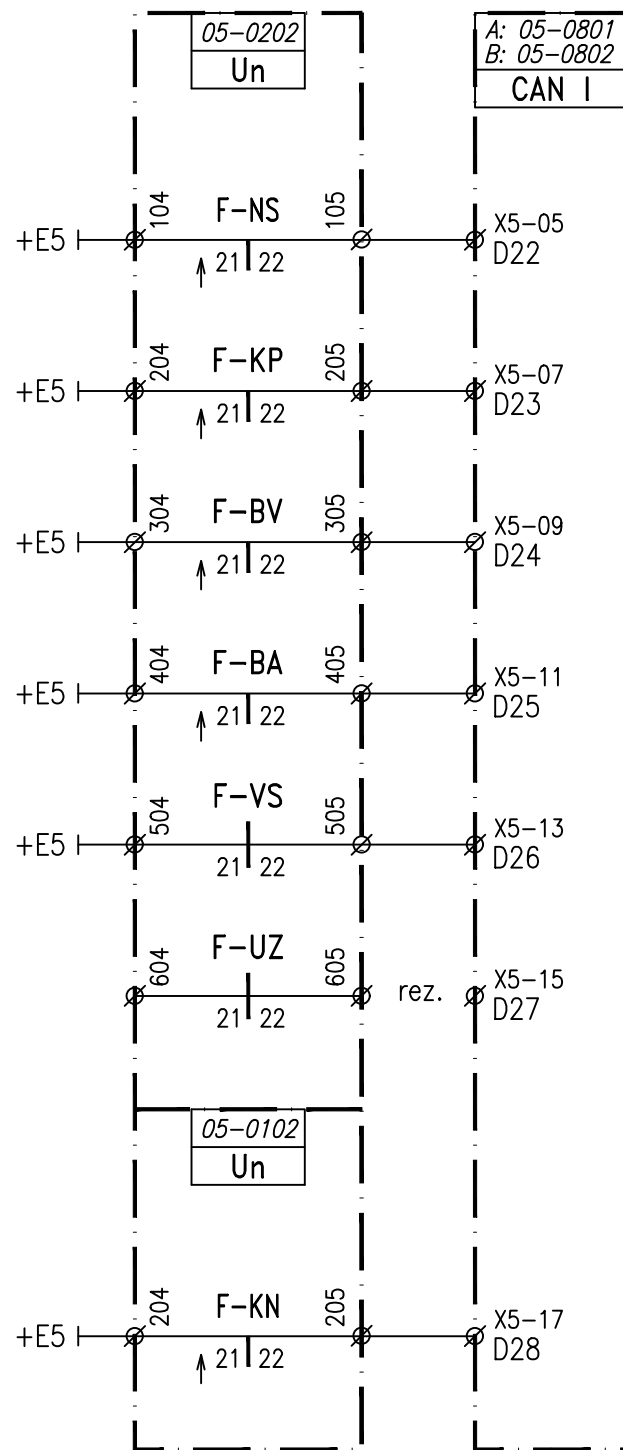
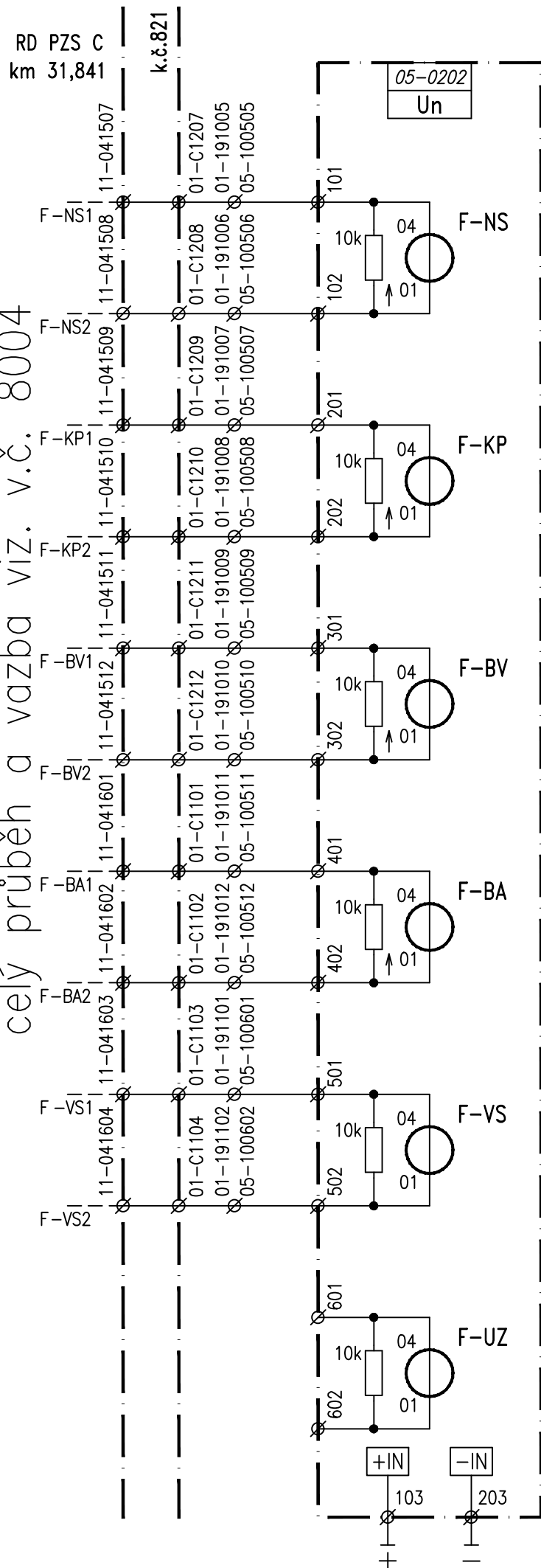
PZS G v km 29,586

25.3.2022

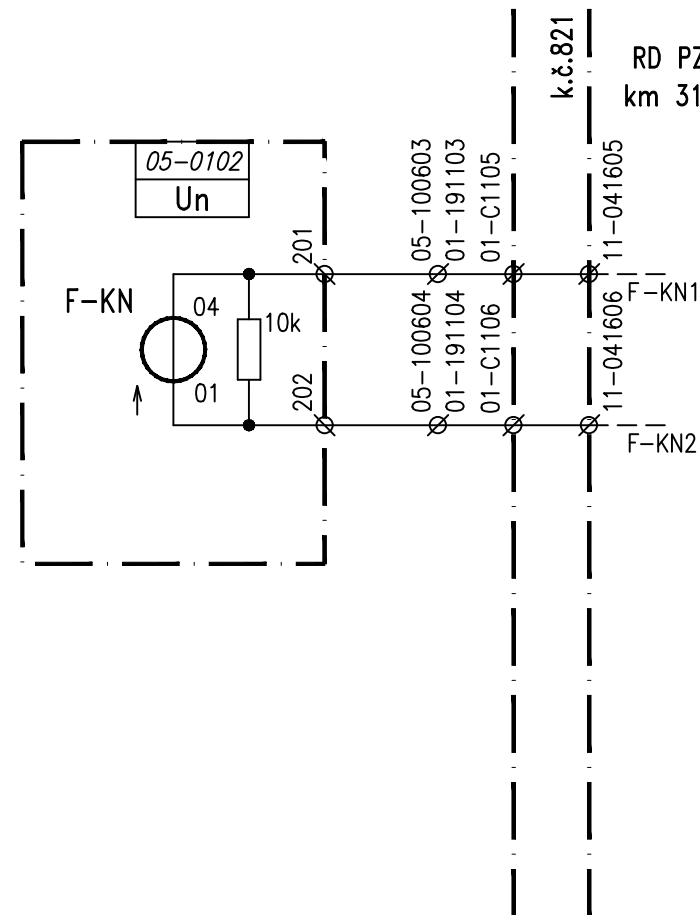
PS 01-01 Nový Bydžov, SZZ

VAZBA PZS "G" V KM 29,586

5006



Komunikační linky diagnostiky PZS viz. v.č. 5015.



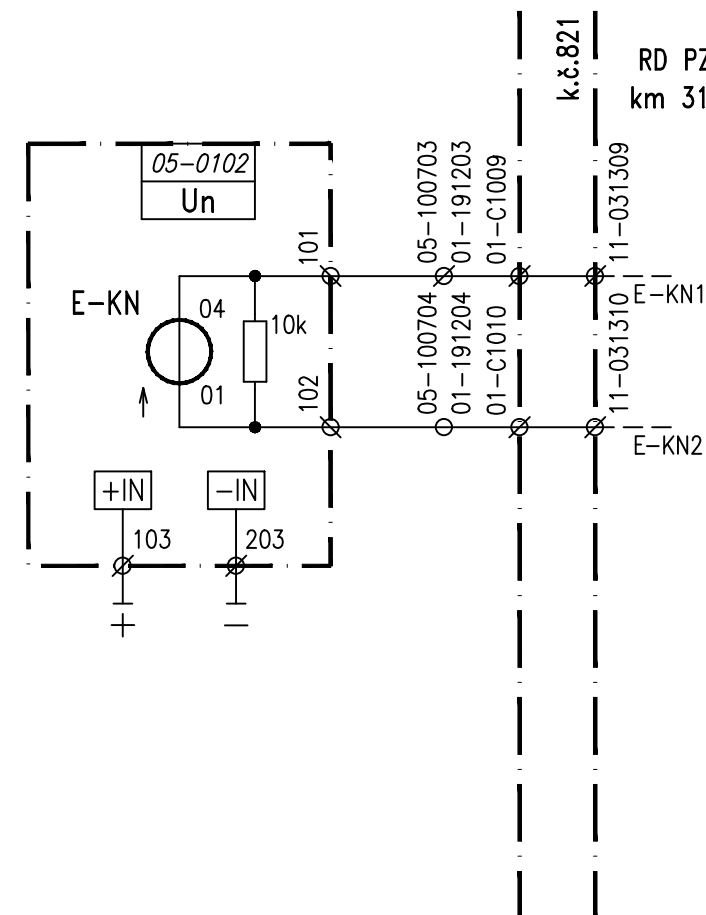
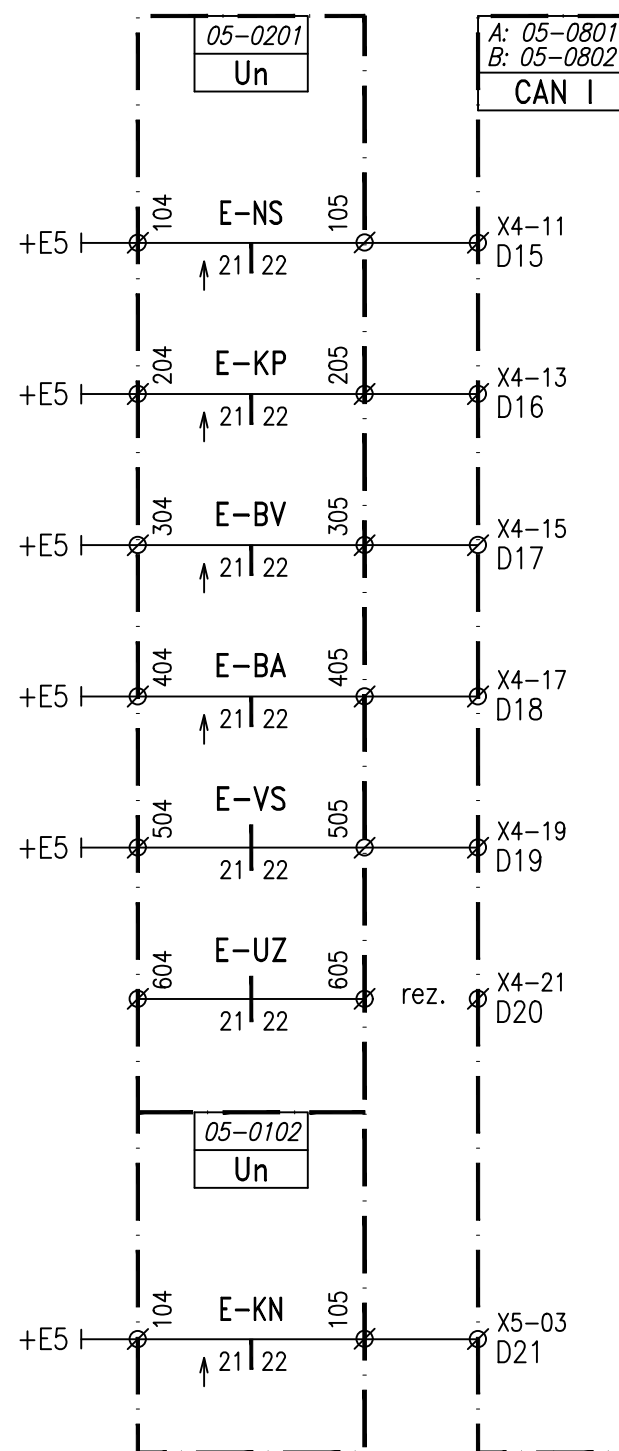
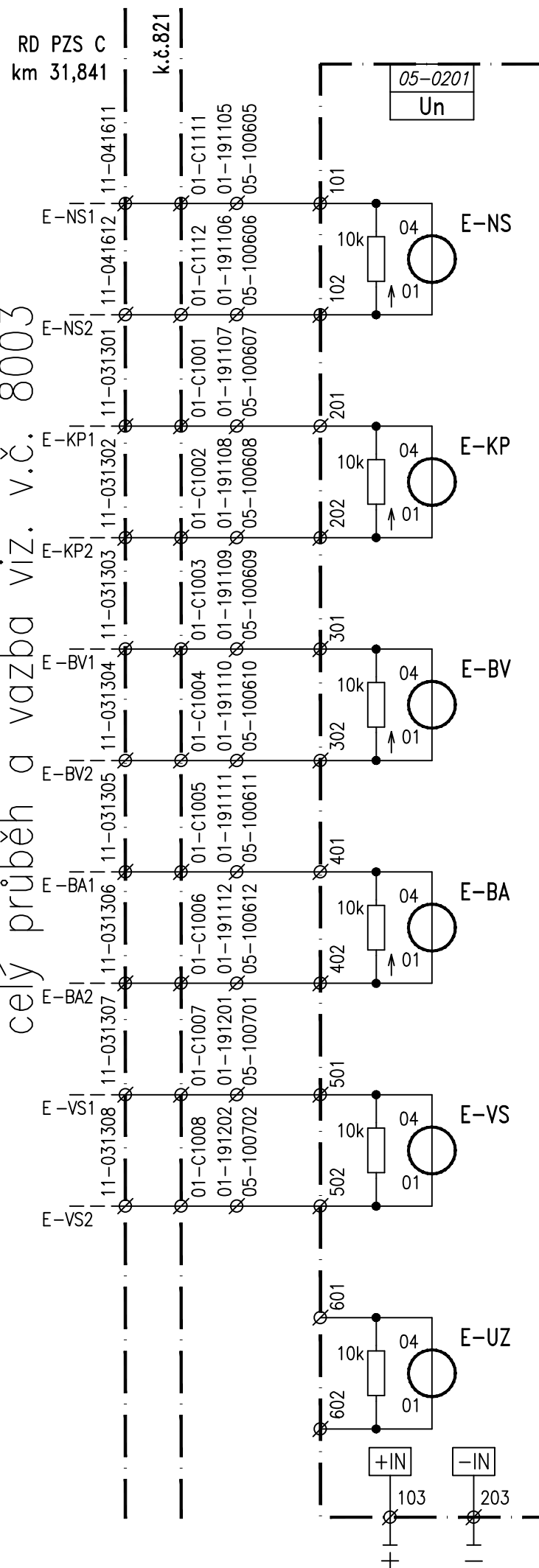
celý průběh a vazba viz. v.č. 8004

PZS F v km 30,045



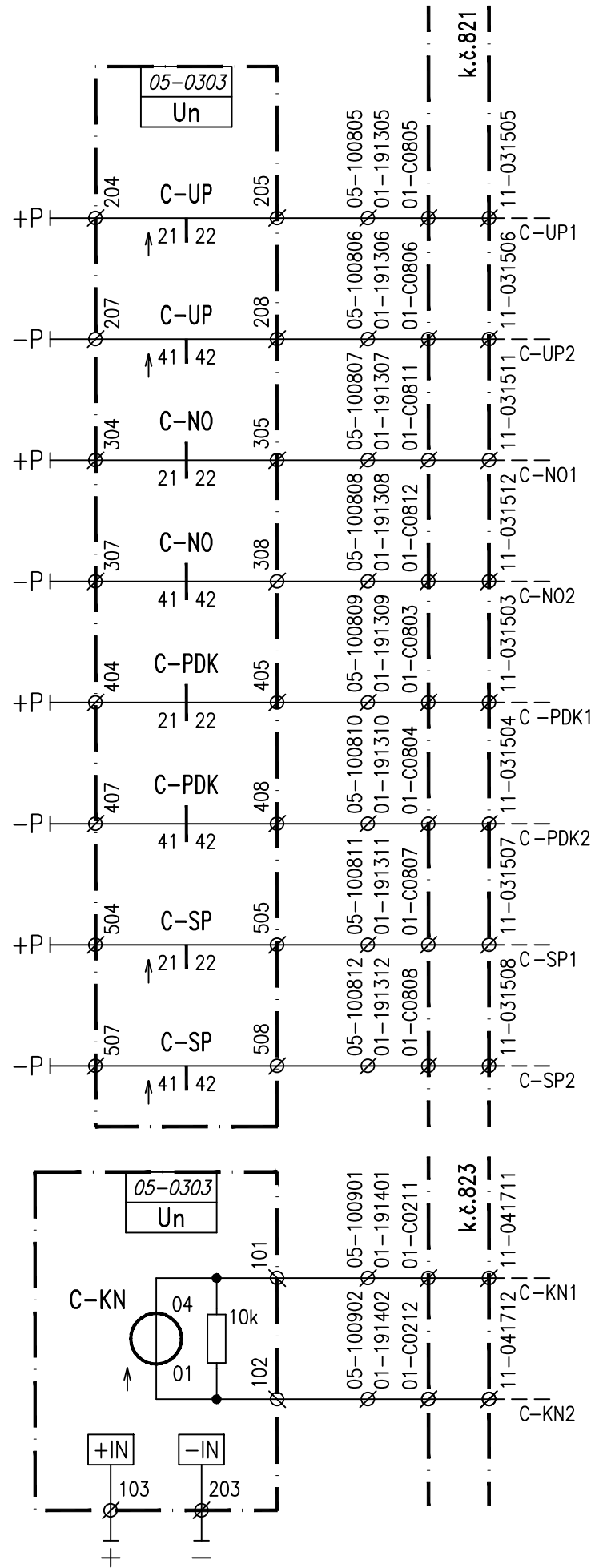
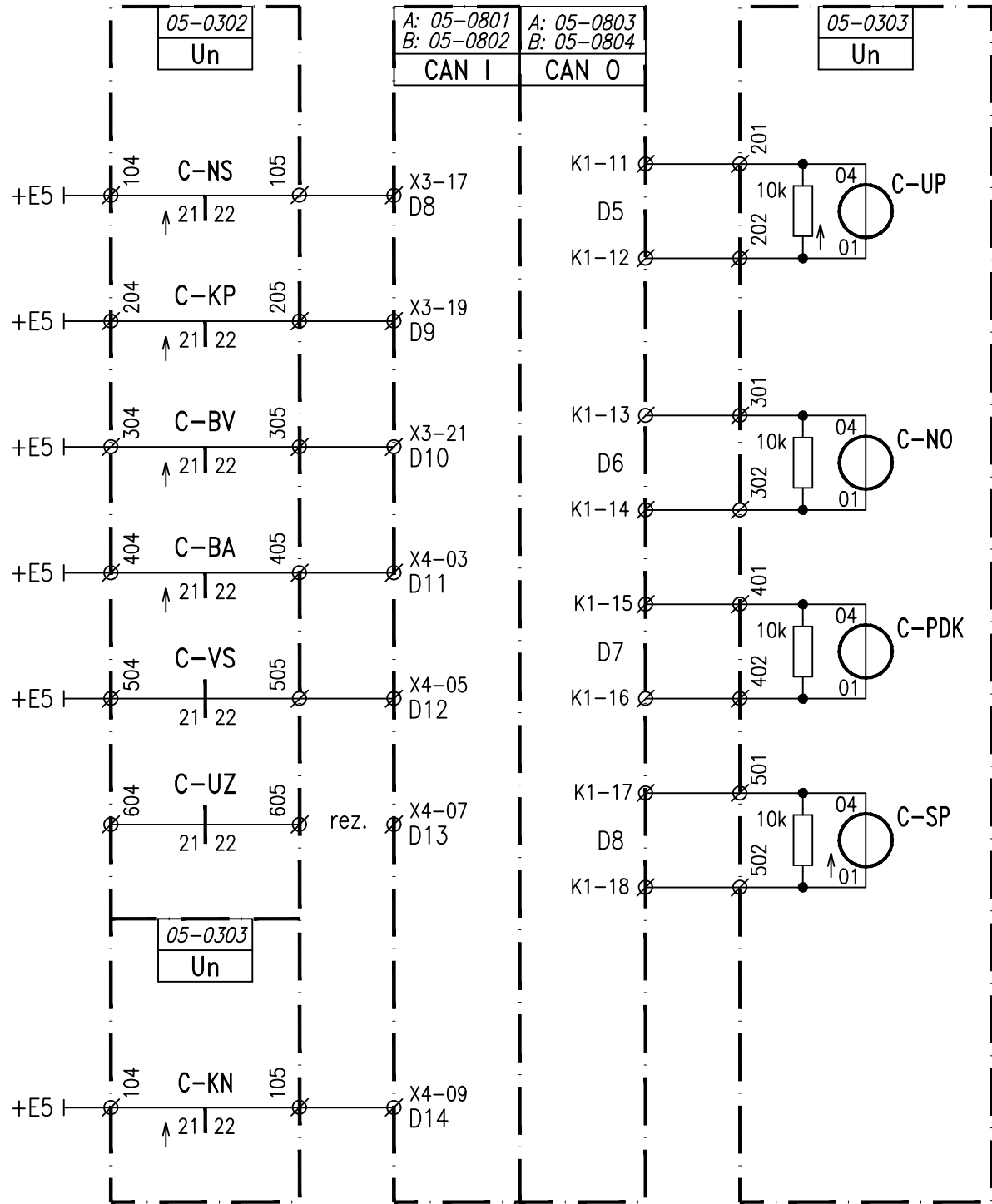
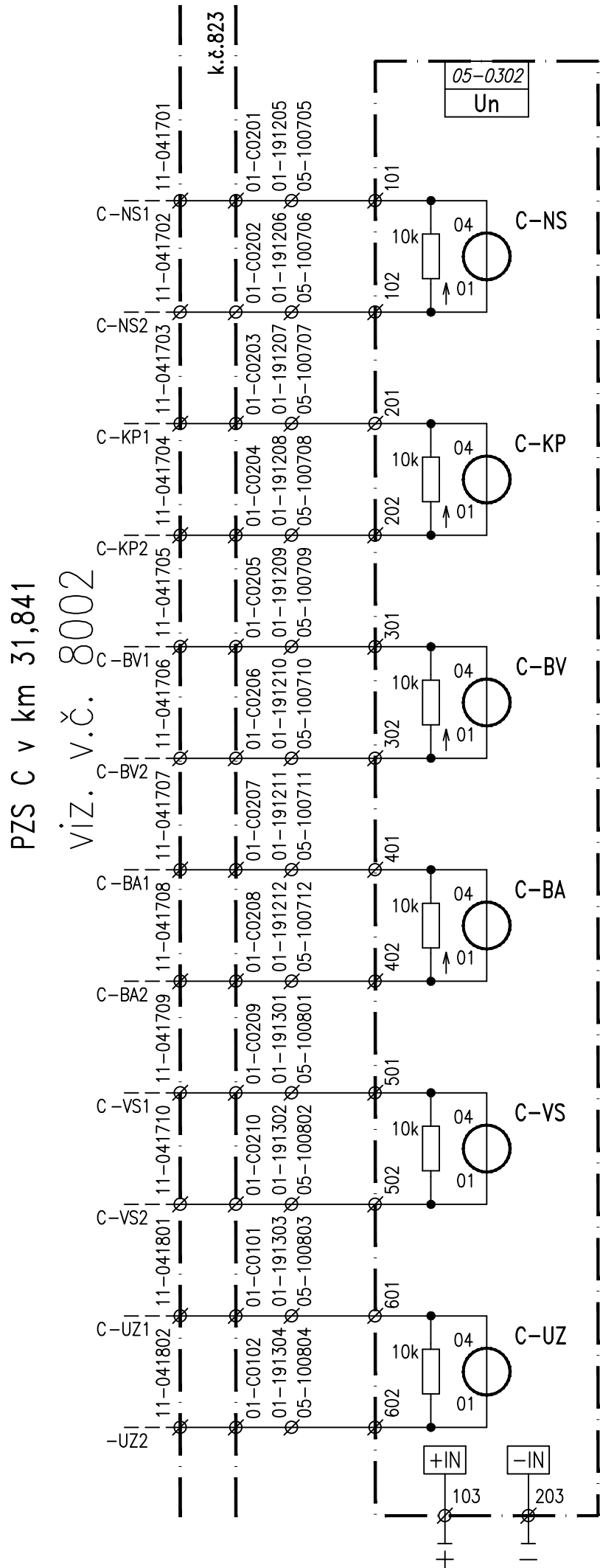
PZS E v km 30,231

celý průběh a vazba viz. v.č. 8003



celý průběh a vazba viz. v.č. 8003

PZS E v km 30,231



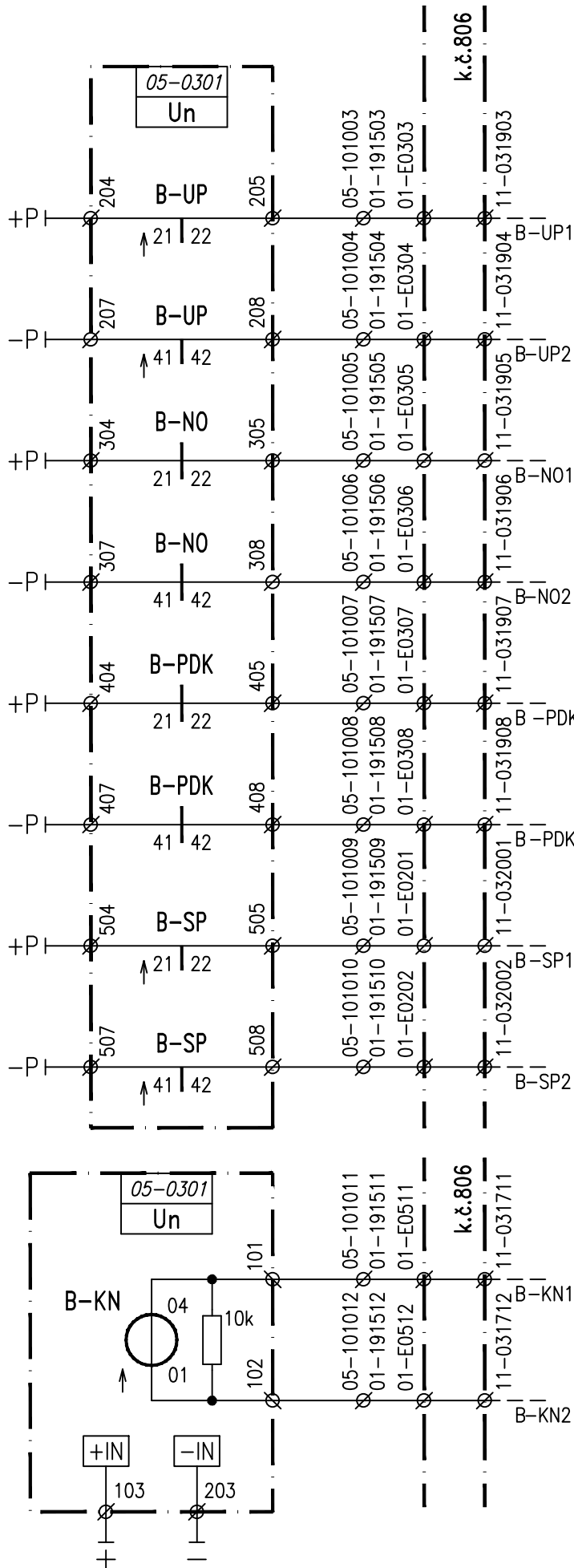
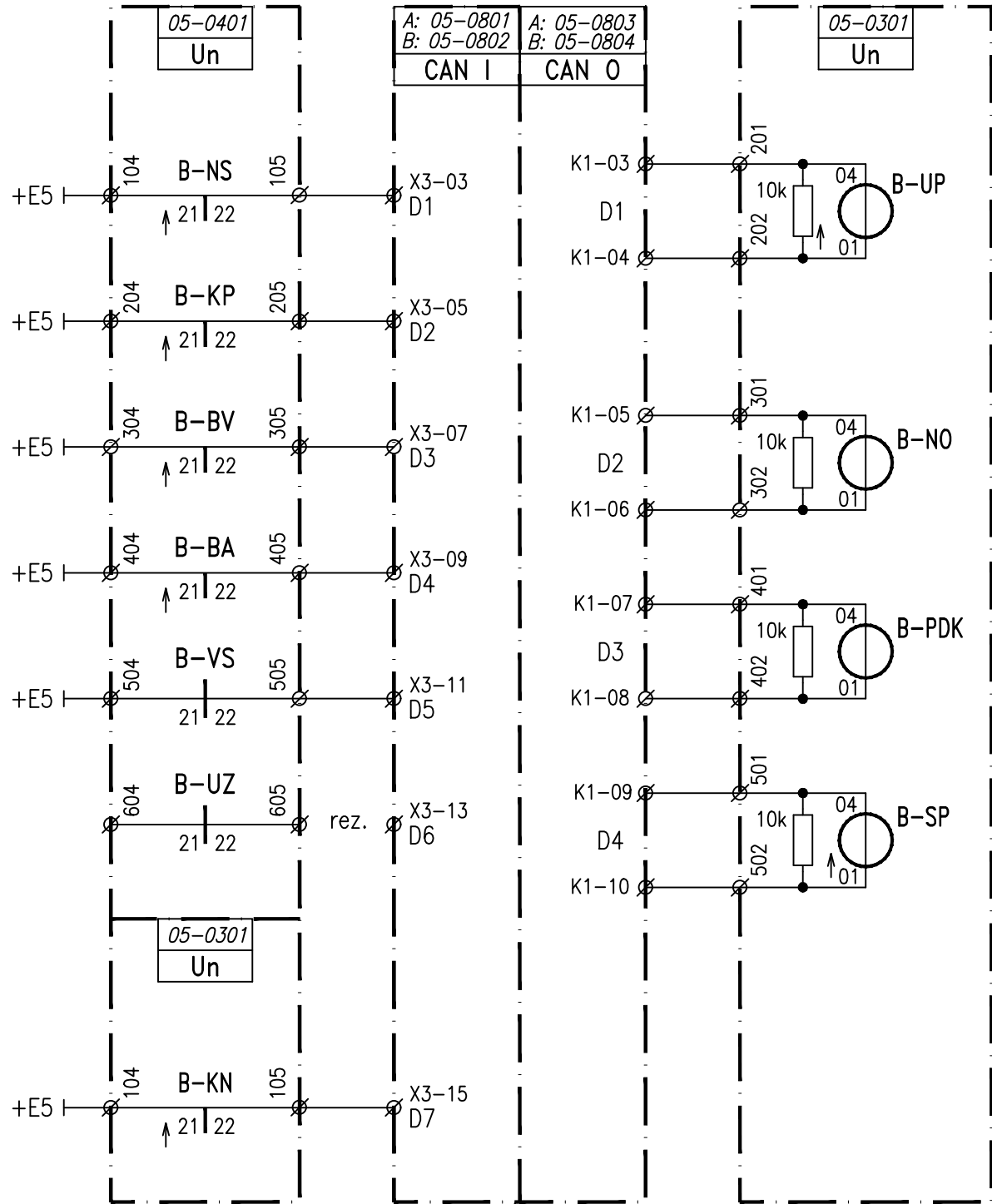
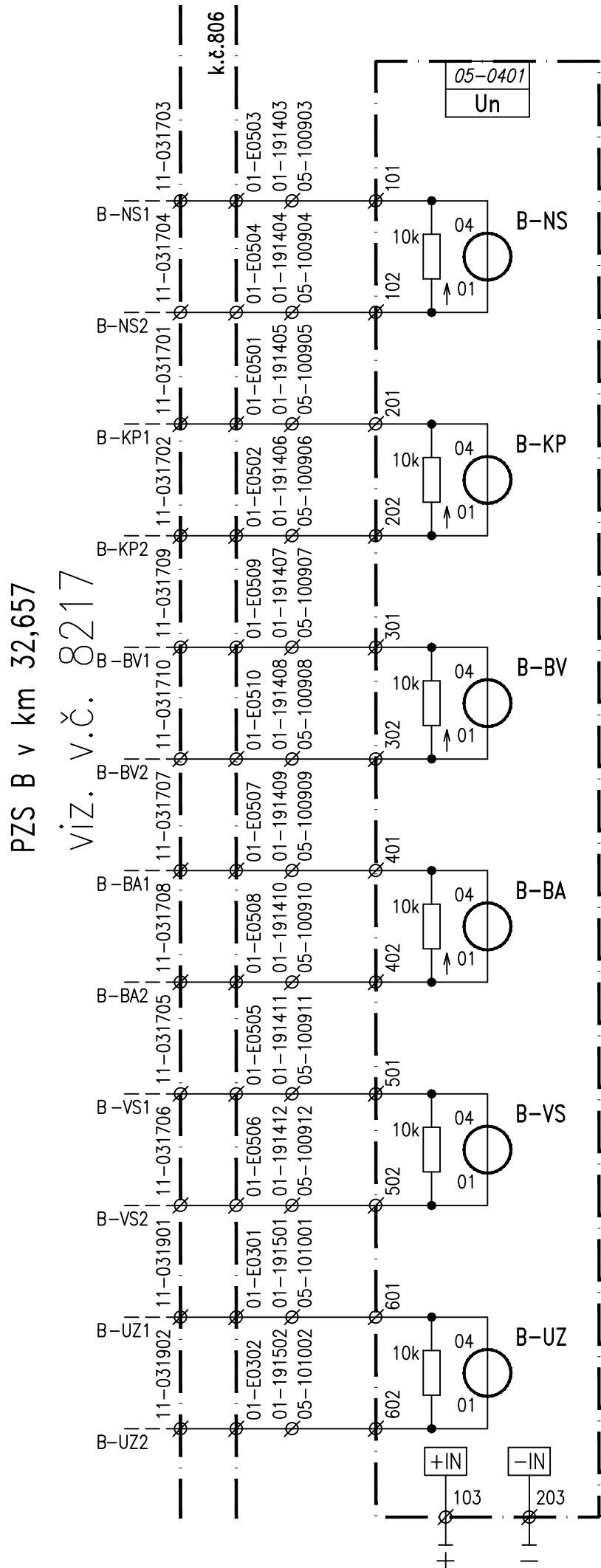
VIZ. V.Č. 8001

PZS C v km 31,841

VIZ. V.Č. 8002

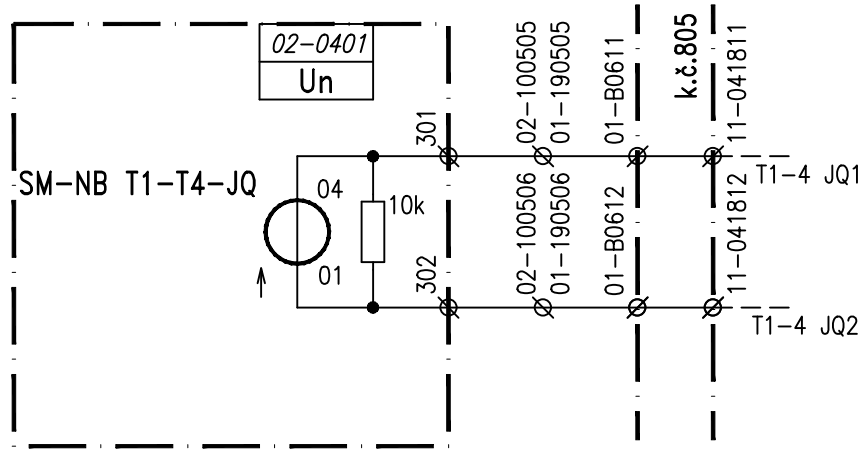
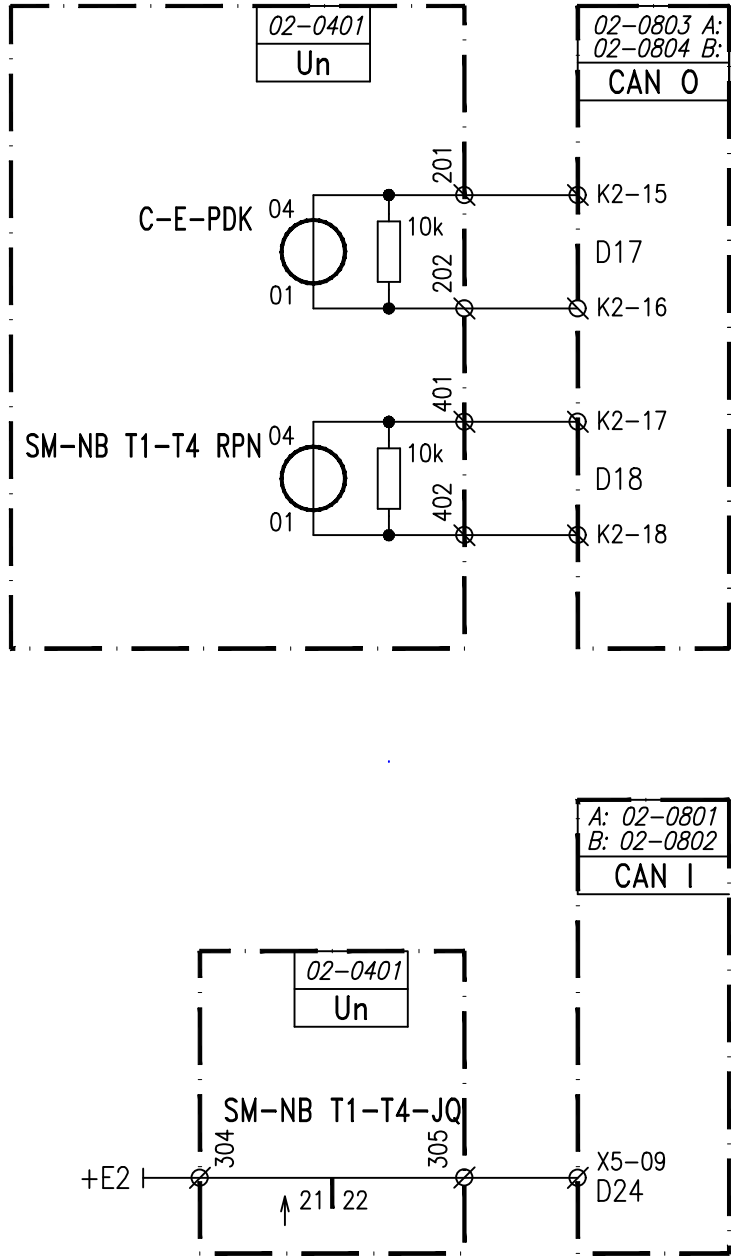
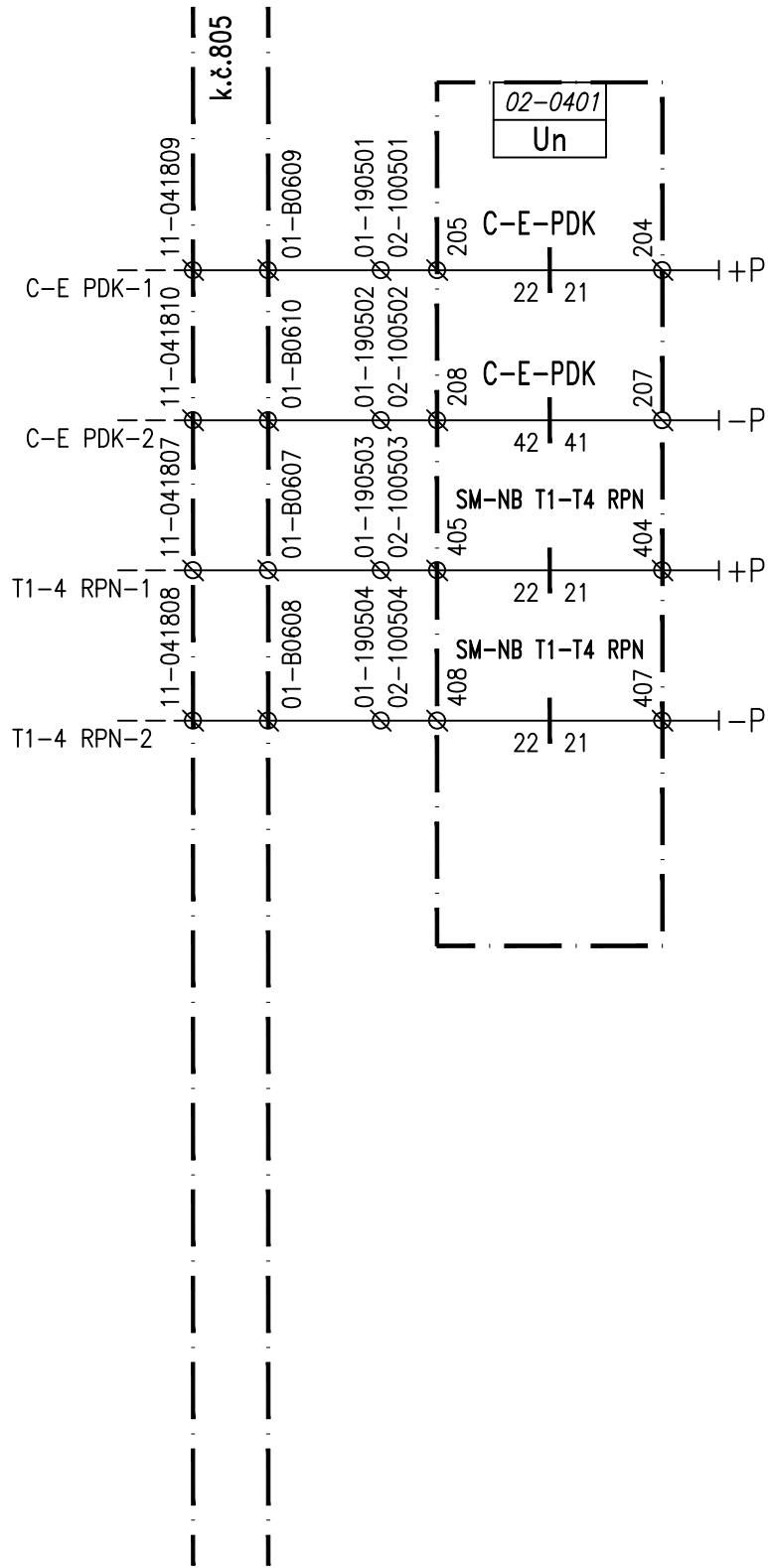
PZS C v km 31,841

Komunikační linky diagnostiky PZS viz. v.č. 5015.

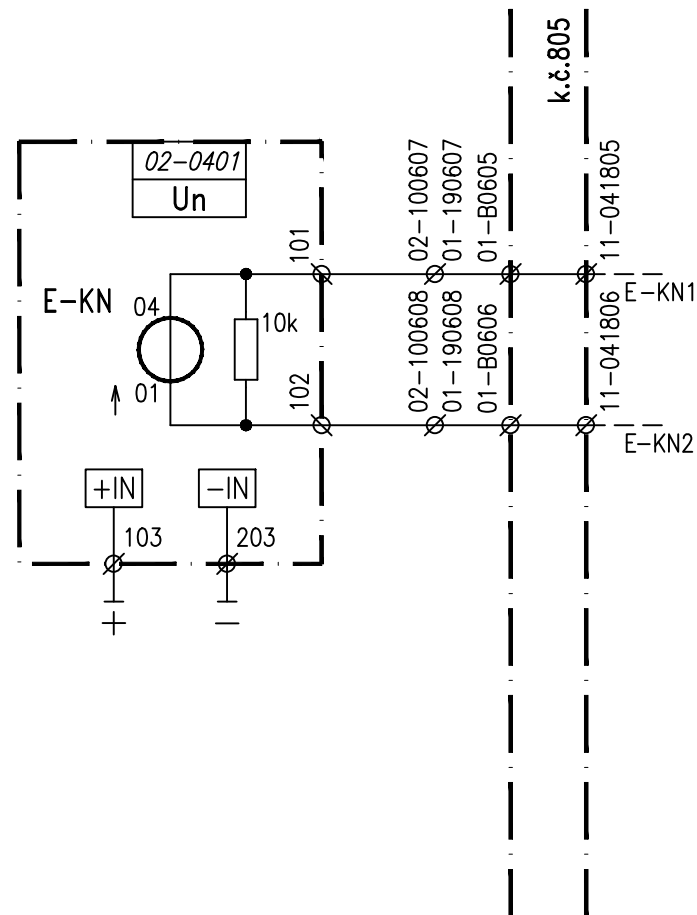
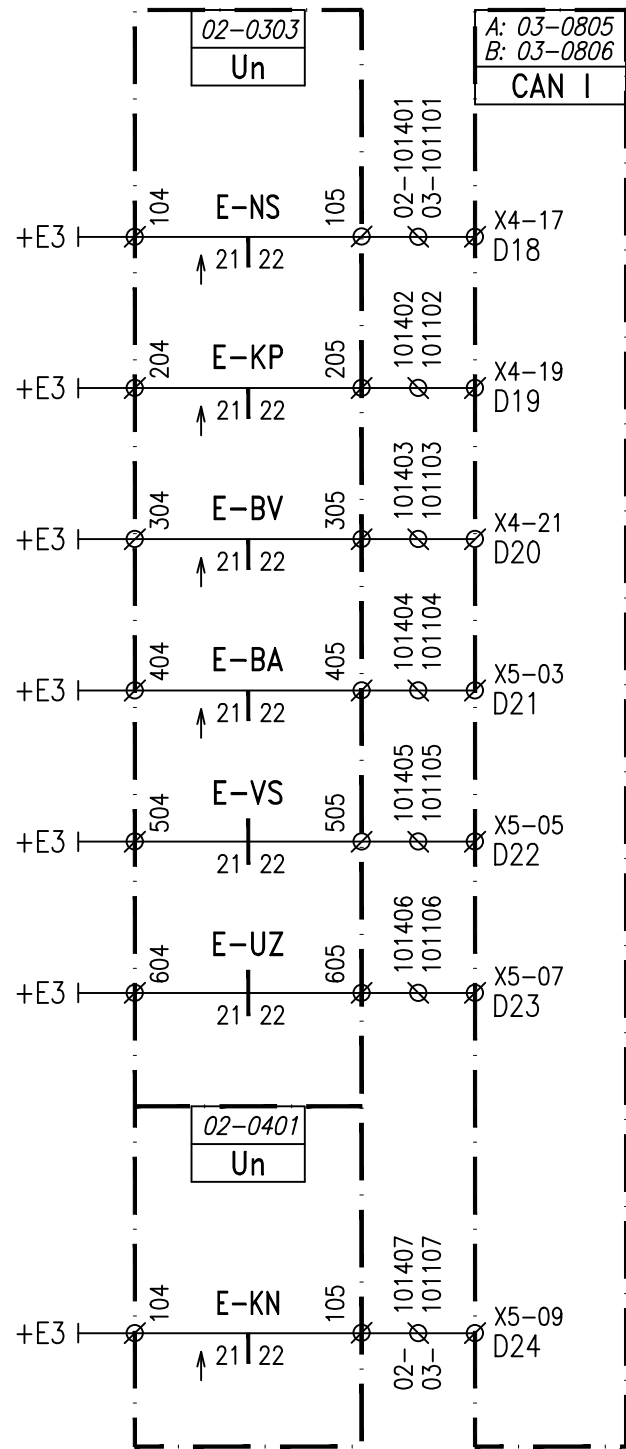
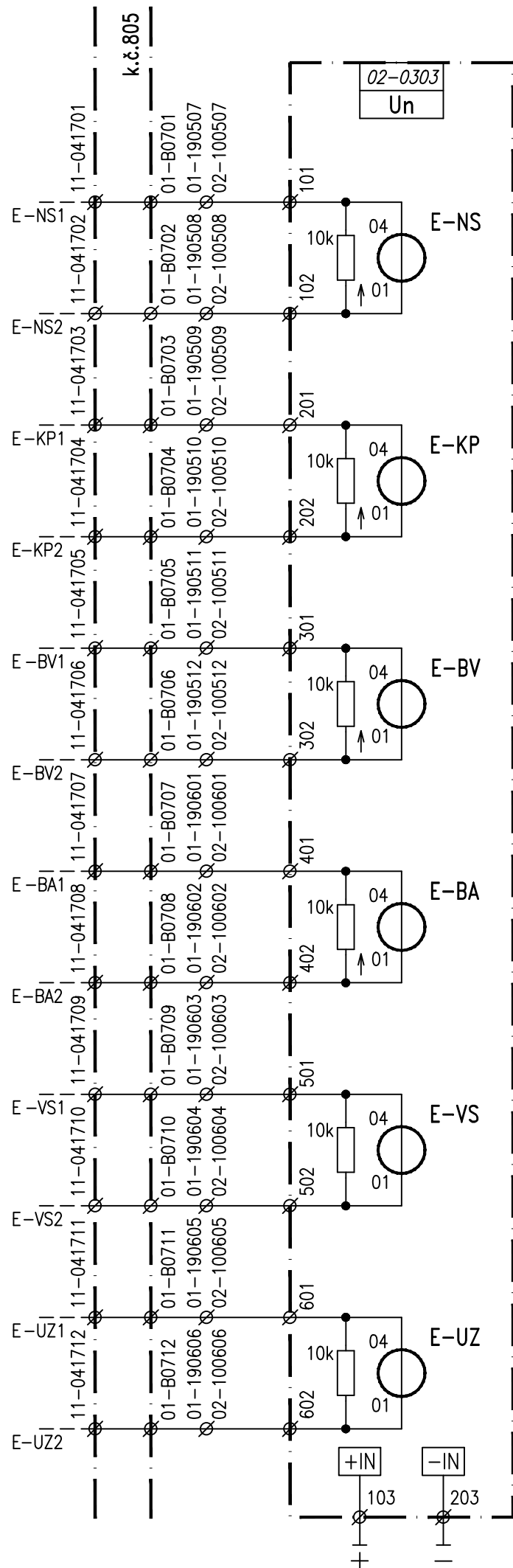


Komunikační linky diagnostiky PZS viz. v.č. 5015.

celý průběh a vazba viz. v.č. 8015

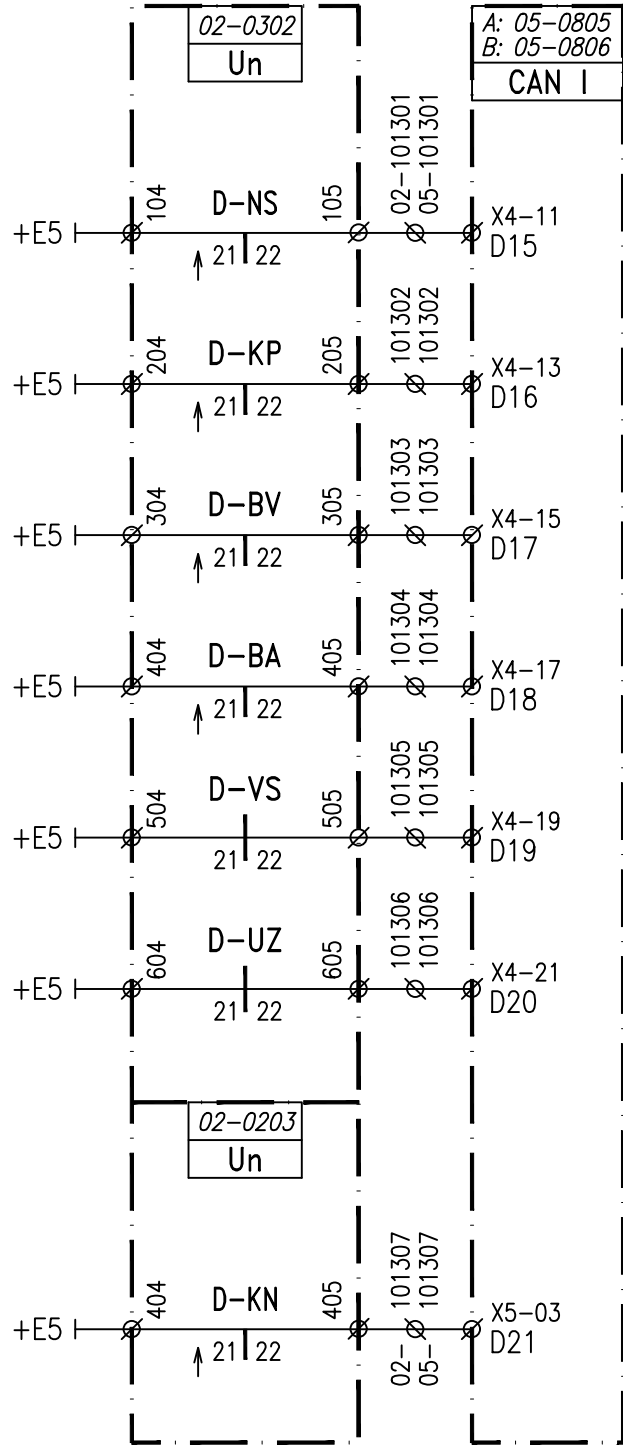
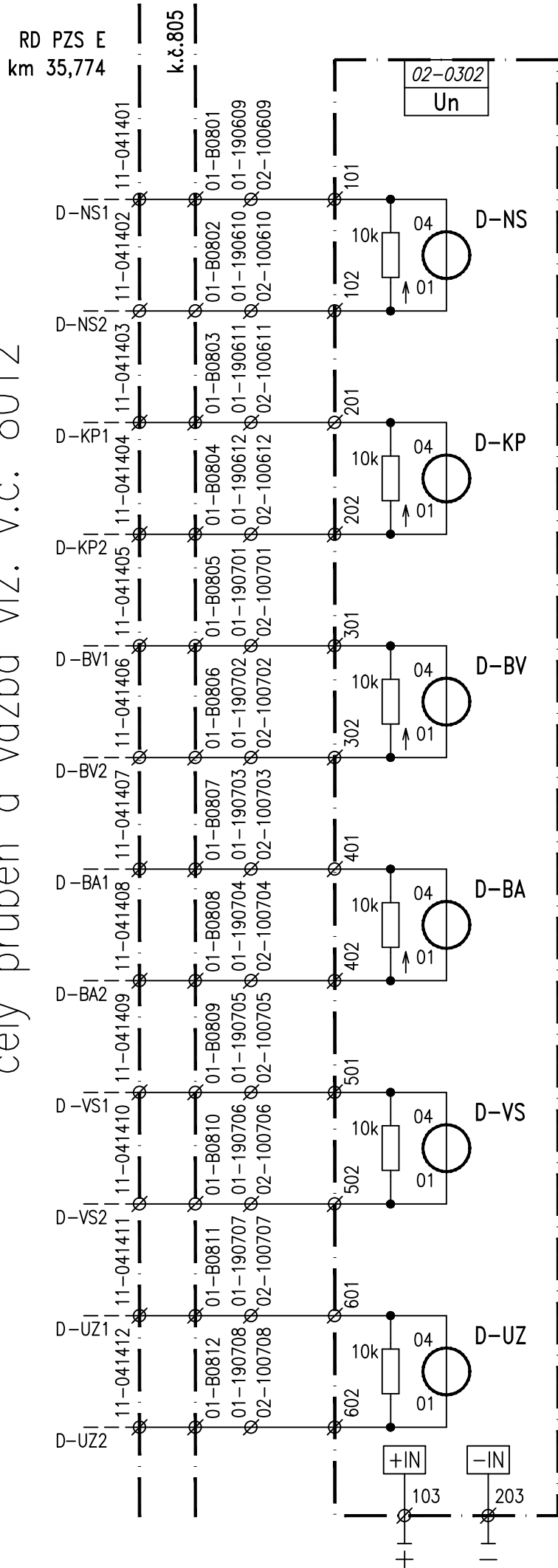


viz. v.č. 8015  
PZS E v km 35,774

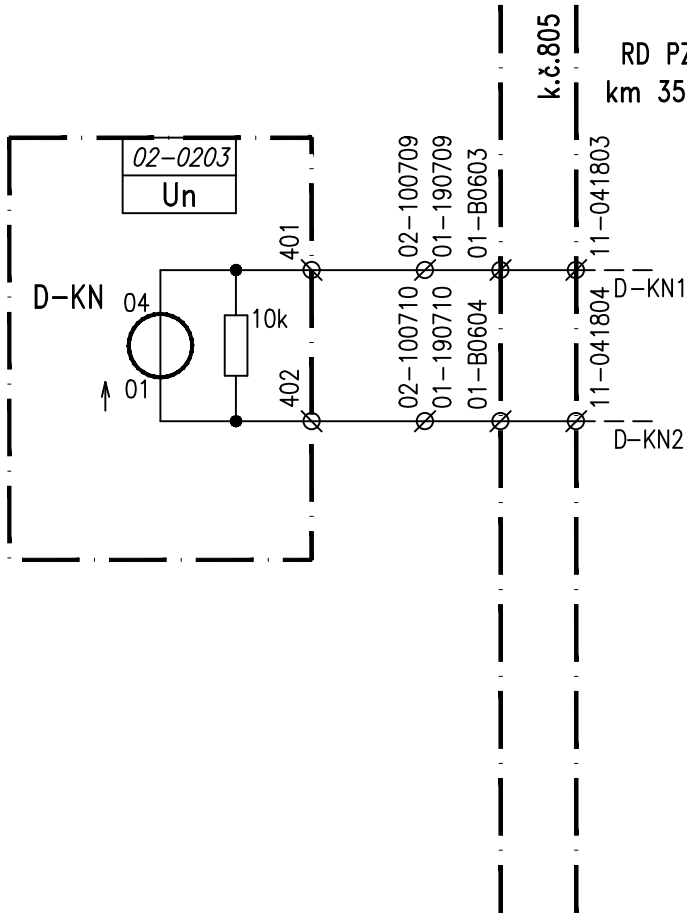


viz. v.č. 8013  
PZS E v km 35,774

celý průběh a vazba viz. v.č. 8012



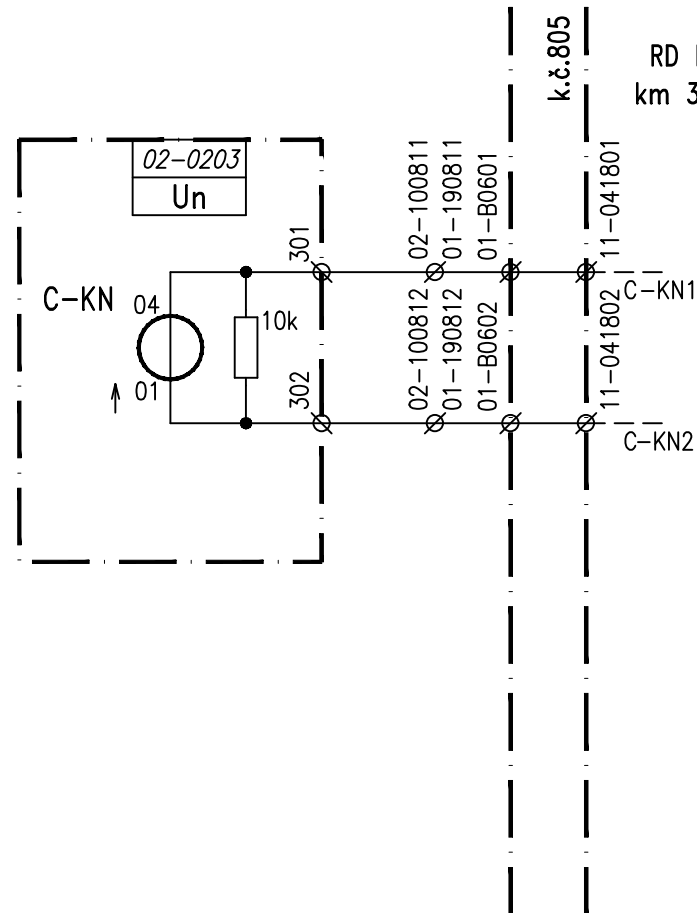
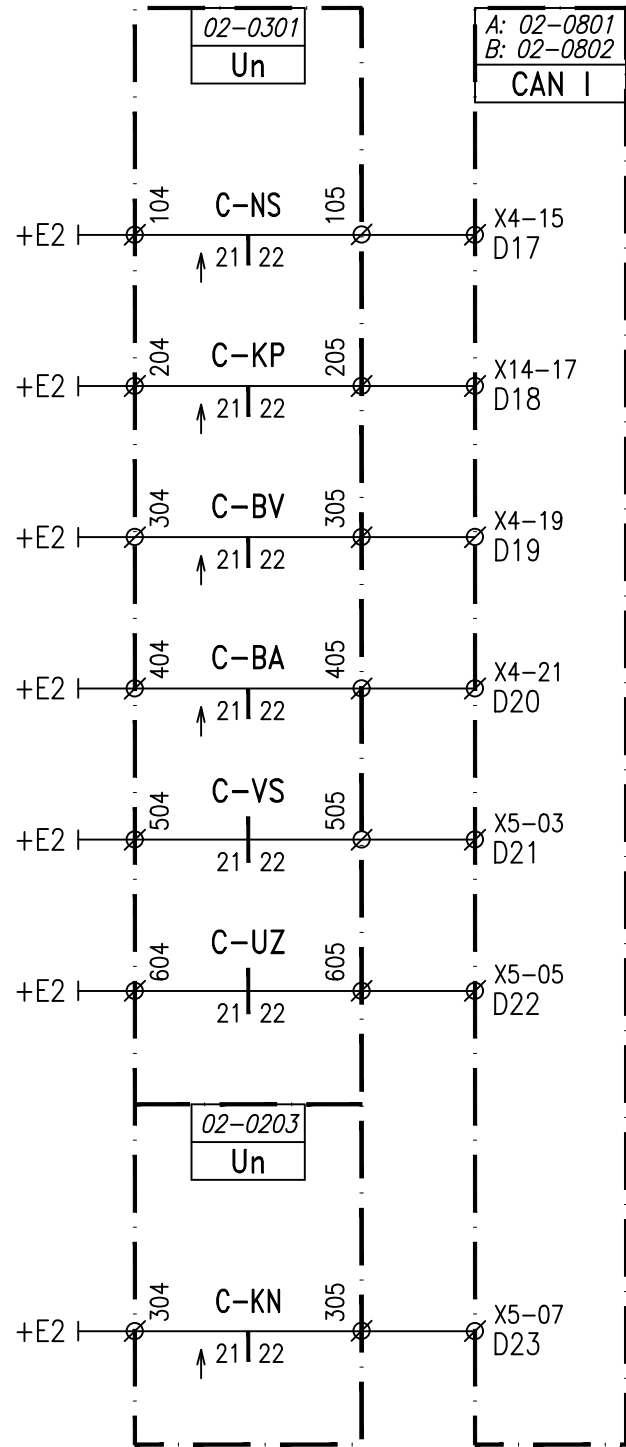
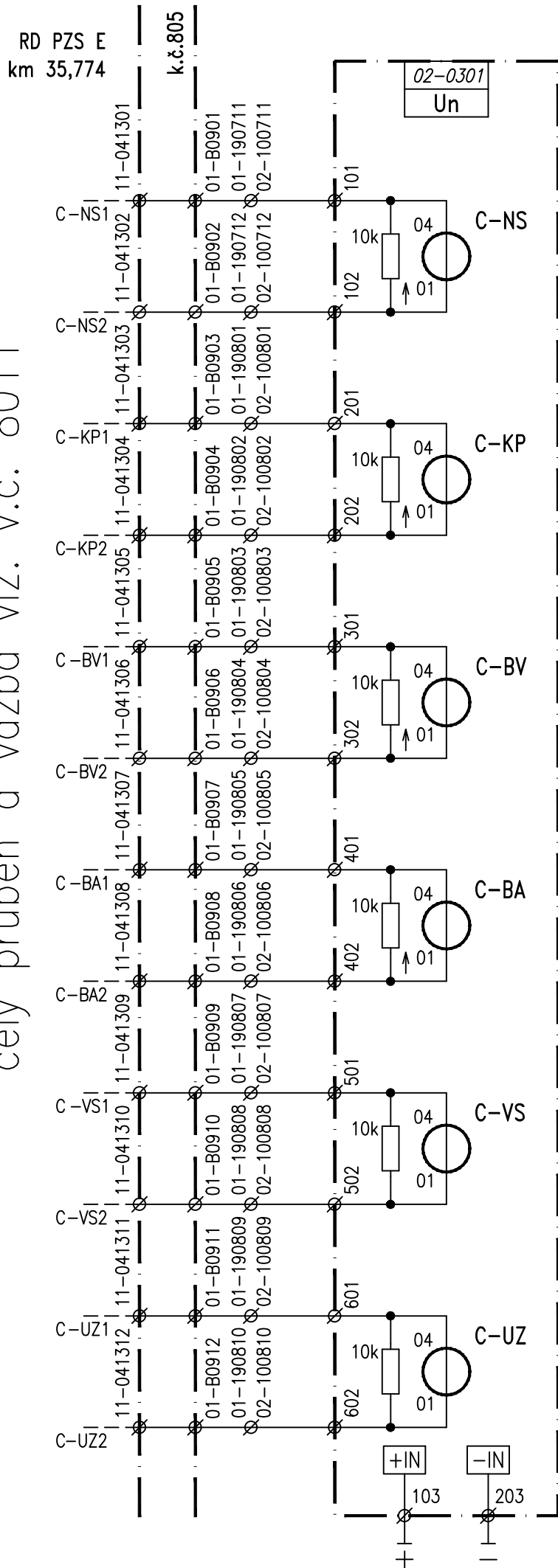
Komunikační linky diagnostiky PZS viz. v.č. 5015.



celý průběh a vazba viz. v.č. 8012

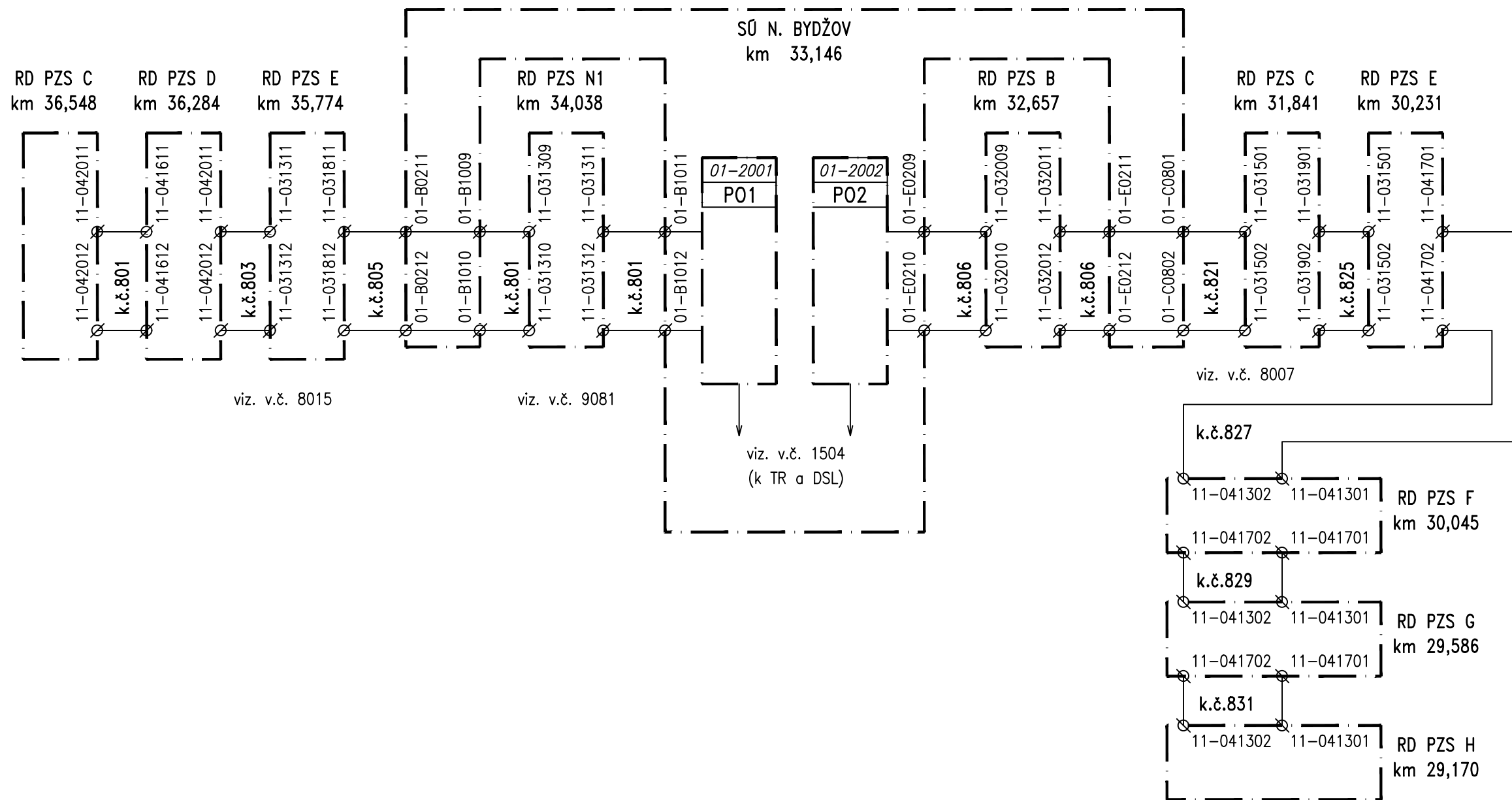
PZS D v km 36,284

celý průběh a vazba viz. v.č. 8011



celý průběh a vazba viz. v.č. 8011

PZS C v km 36,548



Poznámka:

PSZ km 33,125 s výstrojí ve skříni č. 08 napojeno přímo do MÚ DISTA.

3.2.2022

PS 01-01 Nový Bydžov, SZZ	5015
VAZBA PSZ – LINKY DIAGNOSTIKY PSZ	